

# Mapping beyond the MEP on a Shoestring Budget



Dave Herndon, AICP, CSM, CFM  
Street Superintendent



# Changes to Permit from the 2010 KYG20 Permit (Fact Sheet).....

- Expanded the storm-sewer map from locations of all known major outfalls to a comprehensive storm sewer map which shall include the permittee's small MS4 system (**owned and /or operated by the permittee**), including catch basins, pipes, ditches, flood control facilities (retention/detention ponds), post-construction water quality BMPs, and **private post-construction water quality BMPs that have been approved by the MS4.**

# Resources

- Existing outfall and catch basin data
- As-builts
- KYTC Project Archives
- Statewide LiDAR (KY Geography Network)
- Street Centerline files
- Best aerials you can get your hands on
- Google Earth
- Subdivision Plats





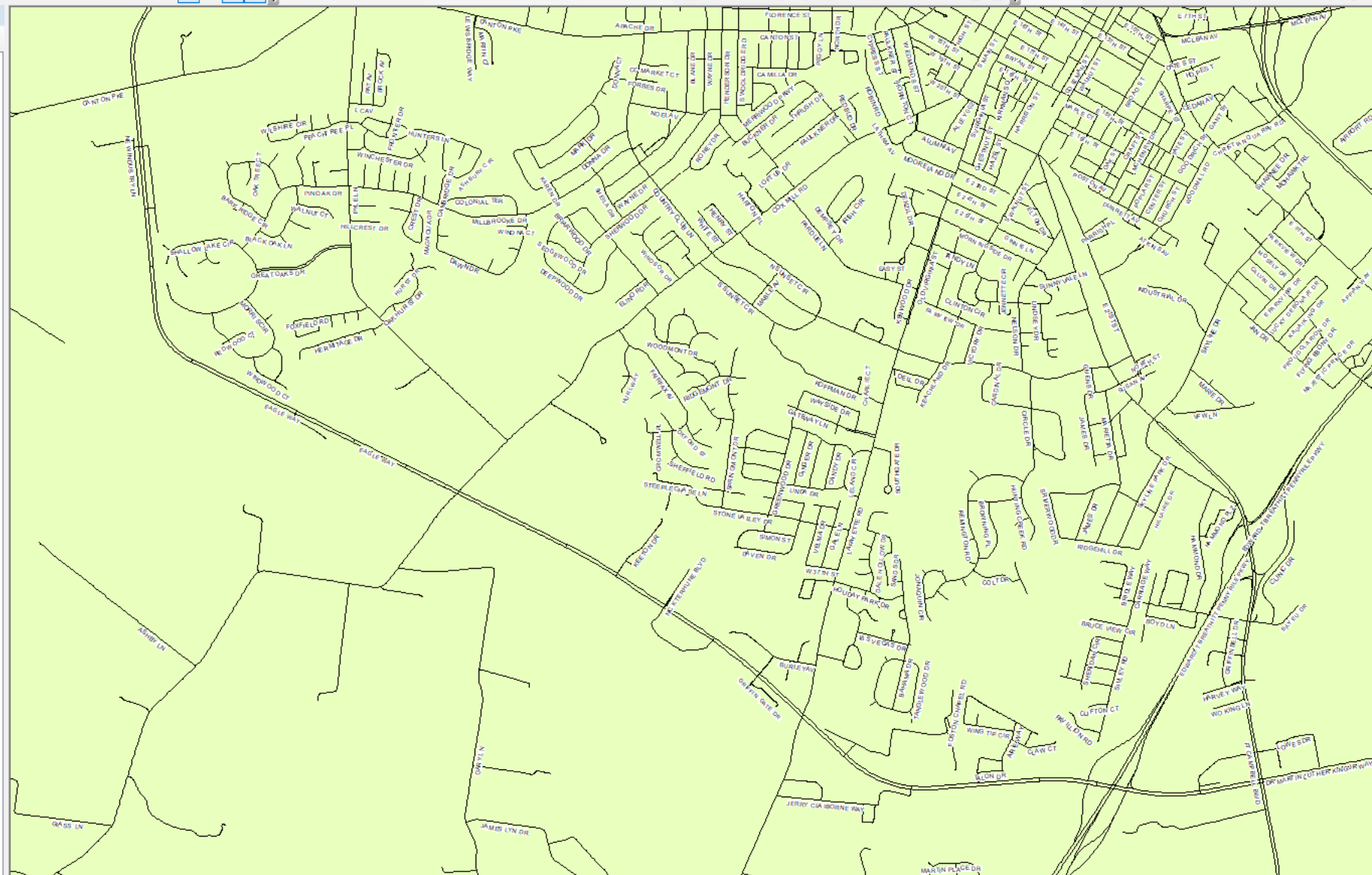
File Edit View Bookmarks Insert Selection Geoprocessing Customize Windows Help

1:24,000 3D Analyst Deepwood1 Georeferencing 143-846.tif Parcel Editor

Drawing Arial 10 B I U A Snapping Editor

Table Of Contents

- Base Mapping
  - Pavement Markings
  - Sivley\_posts
  - Sivley\_Fence
  - Roads
  - WINDMILL\_FARMS
  - STORM SYSTEM
  - Basins
  - Dropbox\_Working
  - STORM\_MASTER
    - TYPE
    - DITCH
    - GUTTER
    - PIPE
  - CARRIAGE WAY
  - WINDMILL\_FARMS
  - Paving
  - Contour\_city\_de1
  - HWEA Utilities
  - City\_Streets
  - Master\_structures
  - Corp\_Limits\_Parcels041817
  - pyle1
  - Deepwood1
  - GO15\_U2
  - city\_dem
  - DFIRM
  - Zoning
  - Hopkinsville City Limits
  - Givens\_DEM
  - Basemap
  - 2008 Aerials
  - Aerials
  - christian co



Attributes

Edit Sketch Properties Attributes

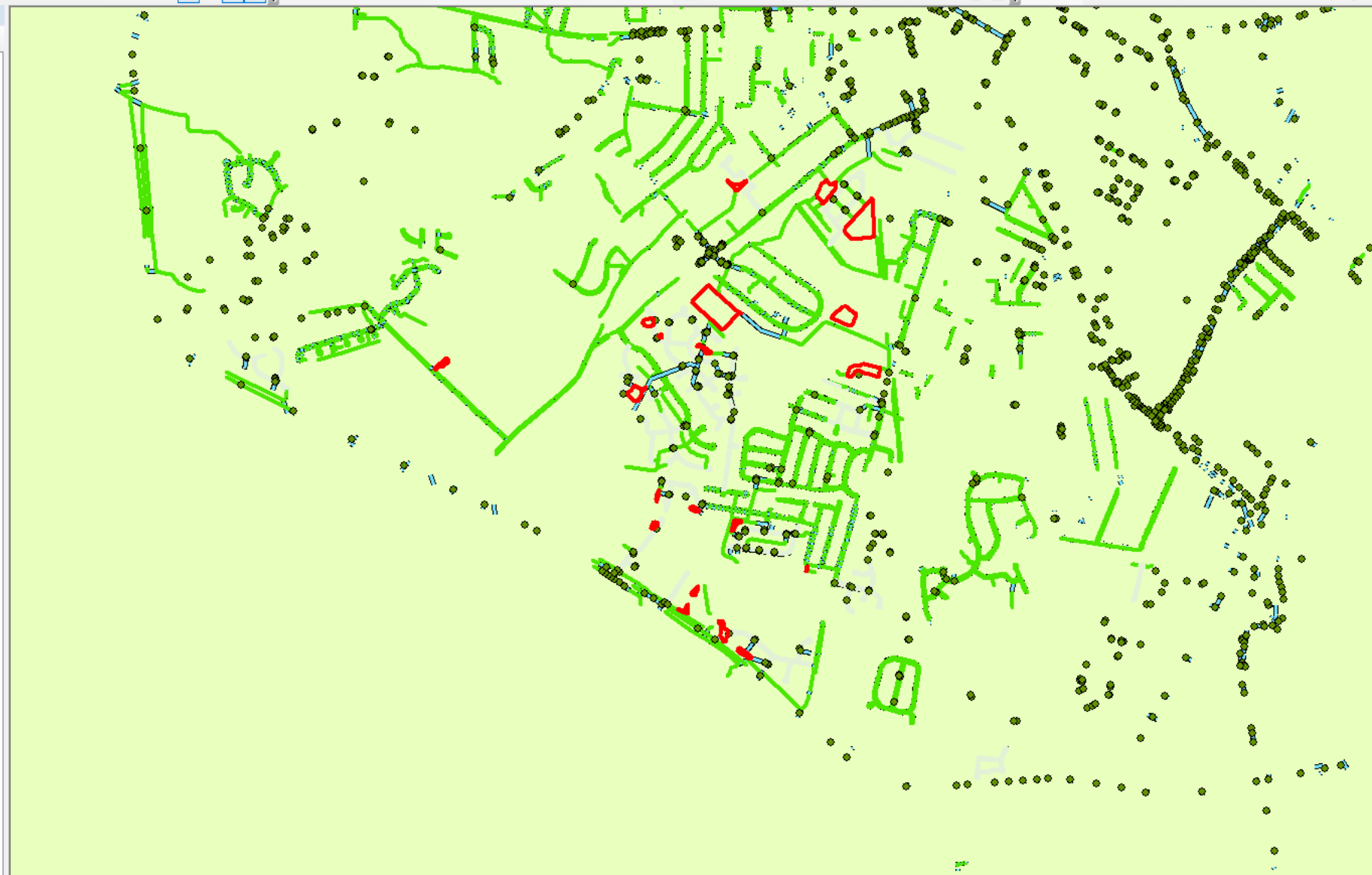


1:24,000 3D Analyst Deepwood1 Georeferencing 143-846.tif Parcel Editor Editor

Drawing Arial 10 B I U A Snapping Editor

Table Of Contents

- Base Mapping
  - Pavement Markings
  - Sivley\_posts
  - Sivley\_Fence
  - Roads
  - WINDMILL\_FARMS
  - STORM SYSTEM
    - Basins
    - Dropbox\_Working
    - STORM\_MASTER
      - TYPE
        - DITCH
        - GUTTER
        - PIPE
  - CARRIAGE WAY
  - WINDMILL\_FARMS
  - Paving
  - Contour\_city\_de1
  - HWEA Utilities
  - City\_Streets
  - Master\_structures
  - Corp\_Limits\_Parcels041817
  - pyle1
  - Deepwood1
  - GO15\_U2
  - city\_dem
  - DFIRM
  - Zoning
  - Hopkinsville City Limits
  - Givens\_DEM
  - Basemap
  - 2008 Aerials
  - Aerials
  - christian co



Attributes

Edit Sketch Properties Attributes



File Edit View Bookmarks Insert Selection Geoprocessing Customize Windows Help

1:5,889

3D Analyst Deepwood1

Georeferencing 143-846.tif

Parcel Editor

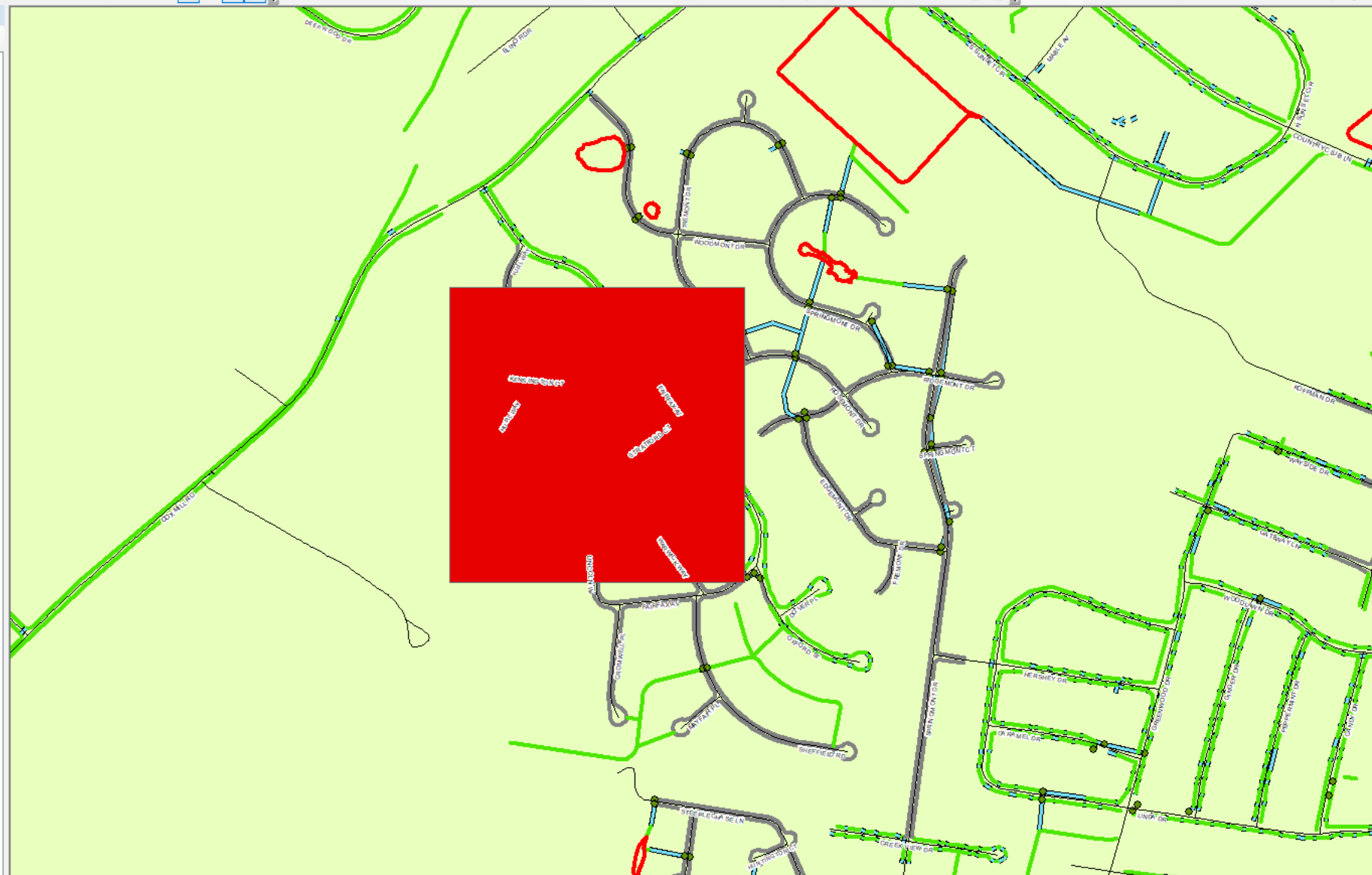
Drawing Arial 10 B I U A

Snapping

Editor

Table Of Contents

- Base Mapping
  - CME
    - Pavement Markings
    - Sivley\_posts
    - Sivley\_Fence
    - Roads
    - WINDMILL\_FARMS
    - STORM SYSTEM
      - Basins
      - Dropbox\_Working
      - STORM\_MASTER
    - TYPE
      - DITCH
      - GUTTER
      - PIPE
  - CARRIAGE WAY
  - WINDMILL\_FARMS
  - Paving
  - Contour\_city\_de1
  - HWEA Utilities
  - City\_Streets
  - Master\_structures
  - Corp\_Limits\_Parcels041817
  - pyle1
  - Deepwood1
  - GO15\_U2
  - city\_dem
  - DFIRM
  - Zoning
  - Hopkinsville City Limits
  - Givens\_DEM
  - Basemap
  - 2008 Aerials
  - Aerials
  - christian co



Attributes

Empty attribute table window.





File Edit View Bookmarks Insert Selection Geoprocessing Customize Windows Help

1:5,889

3D Analyst Deepwood1

Georeferencing 143-846.tif

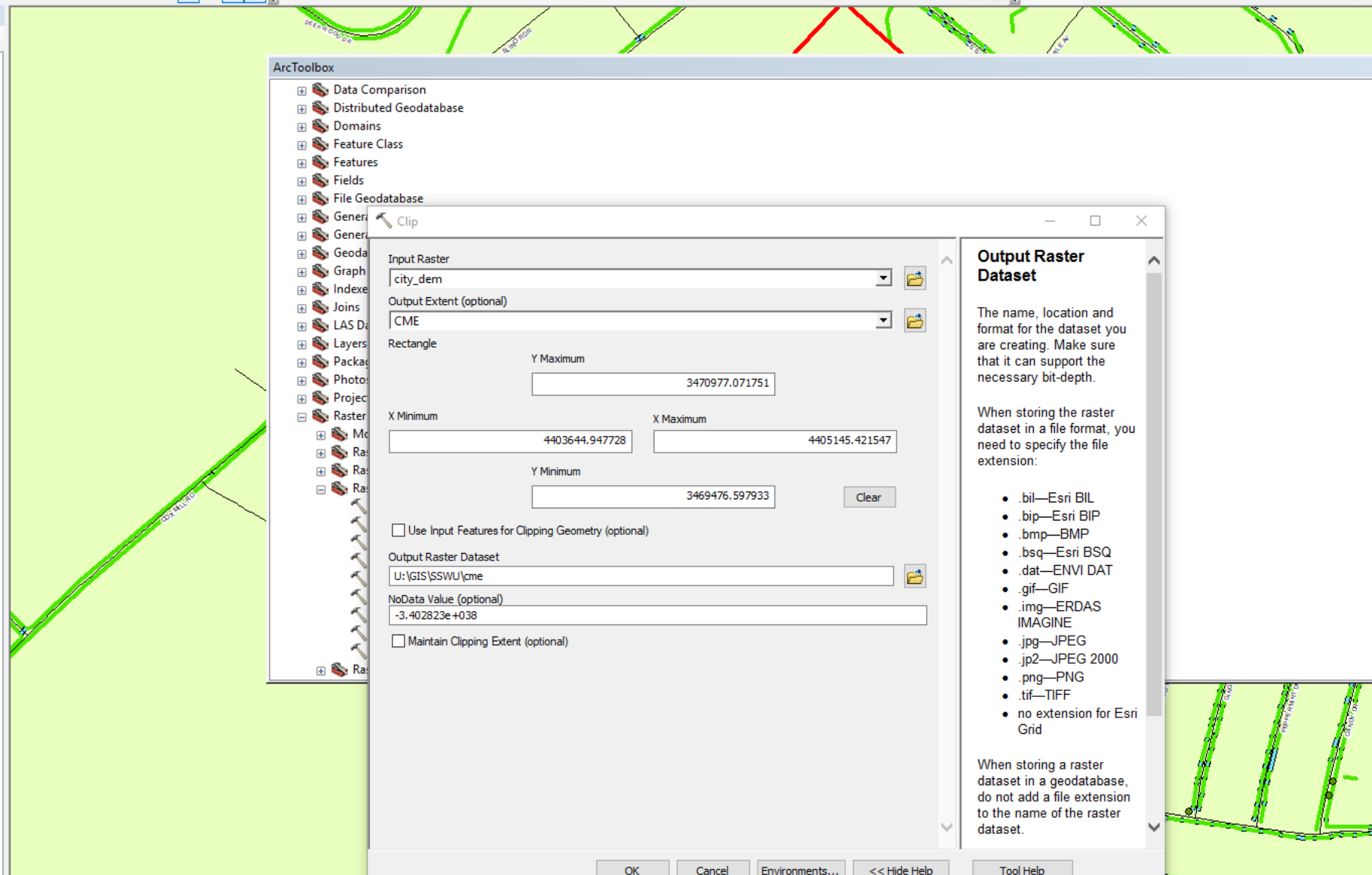
Drawing Arial 10 B I U A

Snapping

Editor

Table Of Contents

- Base Mapping
  - CME
  - Pavement Markings
  - Sivley\_posts
  - Sivley\_Fence
  - Roads
  - WINDMILL\_FARMS
  - STORM SYSTEM
    - Basins
    - Dropbox\_Working
    - STORM\_MASTER
      - TYPE
        - DITCH
        - GUTTER
        - PIPE
    - CARRIAGE WAY
    - WINDMILL\_FARMS
    - Paving
  - Contour\_city\_de1
  - HWEA Utilities
  - City\_Streets
  - Master\_structures
  - Corp\_Limits\_Parcels041817
  - pyle1
  - Deepwood1
  - GO15\_U2
  - city\_dem
  - DFIRM
  - Zoning
  - Hopkinsville City Limits
  - Givens\_DEM
  - Basemap
  - 2008 Aerials
  - Aerials
  - christian co



ArcToolbox

- Data Comparison
- Distributed Geodatabase
- Domains
- Feature Class
- Features
- Fields
- File Geodatabase
- General
- General
- Geodatabase
- Graph
- Index
- Joins
- LAS Data
- Layers
- Packages
- Photos
- Projection
- Raster
  - Clip
  - Mosaic
  - Raster
  - Raster
  - Raster

Clip

Input Raster: city\_dem

Output Extent (optional): CME

Rectangle

Y Maximum: 3470977.071751

X Minimum: 4403644.947728

X Maximum: 4405145.421547

Y Minimum: 3469476.597933

Use Input Features for Clipping Geometry (optional)

Output Raster Dataset: U:\GIS\SSWU\cme

NoData Value (optional): -3.402823e+038

Maintain Clipping Extent (optional)

OK Cancel Environments... << Hide Help Tool Help

Output Raster Dataset

The name, location and format for the dataset you are creating. Make sure that it can support the necessary bit-depth.

When storing the raster dataset in a file format, you need to specify the file extension:

- .bil—Esri BIL
- .bip—Esri BIP
- .bmp—BMP
- .bsq—Esri BSQ
- .dat—ENVI DAT
- .gif—GIF
- .img—ERDAS IMAGINE
- .jpg—JPEG
- .jp2—JPEG 2000
- .png—PNG
- .tif—TIFF
- no extension for Esri Grid

When storing a raster dataset in a geodatabase, do not add a file extension to the name of the raster dataset.

Attributes

Edit Sketch Properties Attributes

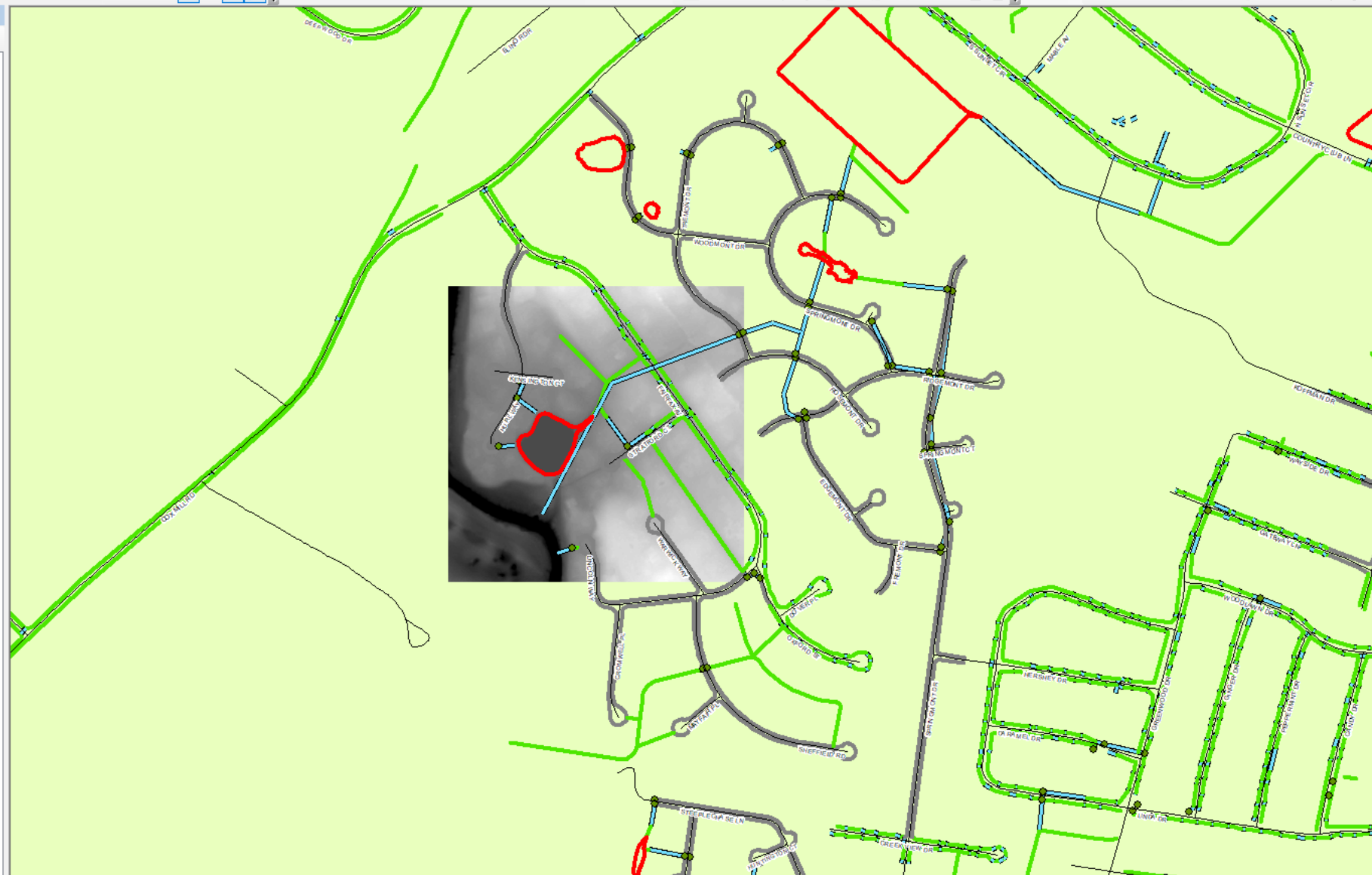
File Edit View Bookmarks Insert Selection Geoprocessing Customize Windows Help

1:5,889 3D Analyst Deepwood1 Georeferencing 143-846.tif Parcel Editor

Drawing Snapping Editor

Table Of Contents

- Base Mapping
  - Pavement Markings
  - Sivley\_posts
  - Sivley\_Fence
  - Roads
  - WINDMILL\_FARMS
  - STORM SYSTEM
    - Basins
    - Dropbox\_Working
    - STORM\_MASTER
  - TYPE
    - DITCH
    - GUTTER
    - PIPE
  - CARRIAGE WAY
  - WINDMILL\_FARMS
  - Paving
  - Contour\_city\_de1
  - HWEA Utilities
  - City\_Streets
  - Master\_structures
  - Corp\_Limits\_Parcels041817
  - cme
    - Value
    - High : 530.849
    - Low : 491.225
  - pyle1
  - Deepwood1
  - GO15\_U2
  - city\_dem
  - DFIRM
  - Zoning
  - Hopkinsville City Limits
  - Givens\_DEM
  - Basemap
  - 2008 Aerials
  - Aerials
  - christian co



Attributes

Edit Sketch Properties Attributes



File Edit View Bookmarks Insert Selection Geoprocessing Customize Windows Help

1:2,038

3D Analyst Deepwood1

Georeferencing 143-846.tif

Drawing Arial 10 B I U A

Snapping

Parcel Editor

Editor

Table Of Contents

- Base Mapping
  - Pavement Markings
  - Sivley\_posts
  - Sivley\_Fence
  - Roads
  - WINDMILL\_FARMS
  - STORM SYSTEM
    - Basins
    - Dropbox\_Working
    - STORM\_MASTER
      - TYPE
      - DITCH
      - GUTTER
      - PIPE
  - CARRIAGE WAY
  - WINDMILL\_FARMS
  - Paving
  - Contour\_city\_de1
  - HWEA Utilities
  - City\_Streets
  - Master\_structures
  - Corp\_Limits\_Parcels041817
  - cme
    - Value
    - High : 530.849
    - Low : 491.225
  - pyle1
  - Deepwood1
  - GO15\_U2
  - city\_dem
  - DFIRM
  - Zoning
  - Hopkinsville City Limits
  - Givens\_DEM
  - Basemap
  - 2008 Aerials
  - Aerials
  - christian co



Attributes

Edit Sketch Properties

Attributes

File Edit View Bookmarks Insert Selection Geoprocessing Customize Windows Help

1:2,038

3D Analyst Deepwood1

Georeferencing 143-846.tif

Drawing Arial 10 B I U A

Snapping

Parcel Editor

Editor

Table Of Contents

- Base Mapping
  - Pavement Markings
  - Sivley\_posts
  - Sivley\_Fence
  - Roads
  - WINDMILL\_FARMS
  - STORM SYSTEM
    - Basins
    - Dropbox\_Working
    - STORM\_MASTER
      - TYPE
      - DITCH
      - GUTTER
      - PIPE
  - CARRIAGE WAY
  - WINDMILL\_FARMS
  - Paving
  - Contour\_city\_de1
  - HWEA Utilities
  - City\_Streets
  - Master\_structures
  - Corp\_Limits\_Parcels041817
  - cme
    - Value
    - High : 530.849
    - Low : 491.225
  - pyle1
  - Deepwood1
  - GO15\_U2
  - city\_dem
  - DFIRM
  - Zoning
  - Hopkinsville City Limits
  - Givens\_DEM
  - Basemap
  - 2008 Aerials
  - Aerials
  - christian co



Attributes

Edit Sketch Properties

Attributes

File Edit View Bookmarks Insert Selection Geoprocessing Customize Windows Help

1:2,038

3D Analyst Deepwood1

Georeferencing 143-846.tif

Drawing Arial 10 B I U A

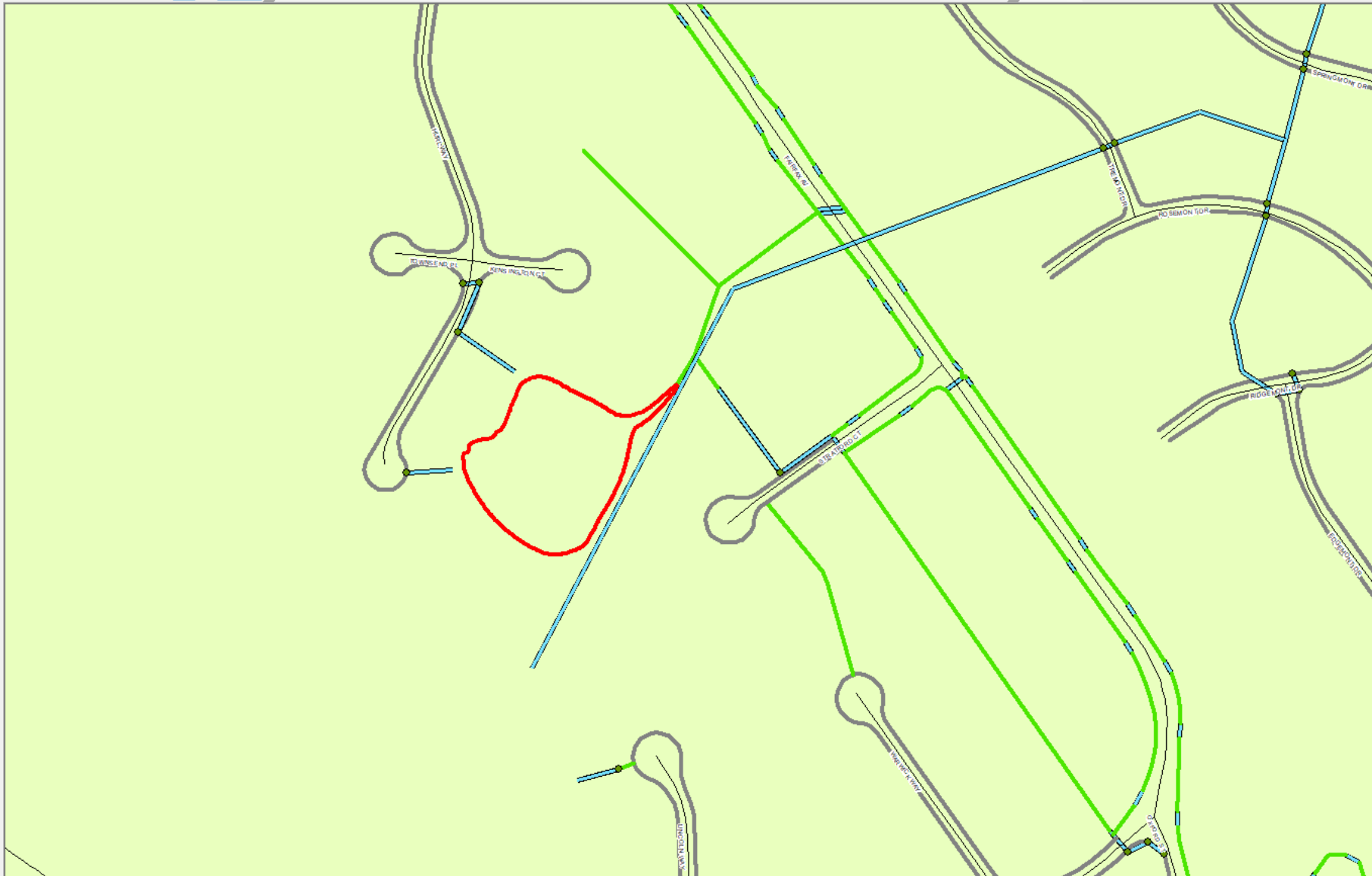
Snapping

Parcel Editor

Editor

Table Of Contents

- Base Mapping
  - Pavement Markings
  - Sivley\_posts
  - Sivley\_Fence
  - Roads
  - WINDMILL\_FARMS
  - STORM\_SYSTEM
    - Basins
    - Dropbox\_Working
    - STORM\_MASTER
      - TYPE
      - DITCH
      - GUTTER
      - PIPE
  - CARRIAGE\_WAY
  - WINDMILL\_FARMS
  - Paving
  - Contour\_city\_de1
  - HWEA\_Uilities
  - City\_Streets
  - Master\_structures
  - Corp\_Limits\_Parcel041817
  - cme
    - Value
    - High : 530.849
    - Low : 491.225
  - pyle1
  - Deepwood1
  - GO15\_U2
  - city\_dem
  - DFIRM
  - Zoning
  - Hopkinsville City Limits
  - Givens\_DEM
  - Basemap
  - 2008 Aerials
  - Aerials
  - christian co



Attributes

Edit Sketch Properties

Attributes



File Edit View Bookmarks Insert Selection Geoprocessing Customize Windows Help

1:276

3D Analyst Deepwood1

Georeferencing 143-846.tif

Parcel Editor

Drawing Arial 10 B I U A

Snapping

Editor

Table Of Contents

- Base Mapping
  - Pavement Markings
  - Sivley\_posts
  - Sivley\_Fence
  - Roads
  - WINDMILL\_FARMS
  - STORM SYSTEM
    - Basins
    - Dropbox\_Working
    - STORM\_MASTER
  - TYPE
    - DITCH
    - GUTTER
    - PIPE
  - CARRIAGE WAY
  - WINDMILL\_FARMS
  - Paving
  - Contour\_city\_de1
  - HWEA Utilities
  - City\_Streets
  - Master\_structures
  - Corp\_Limits\_Parcels041817
  - cme
    - Value
    - High : 530.849
    - Low : 491.225
  - pyle1
  - Deepwood1
  - GO15\_U2
  - city\_dem
  - DFIRM
  - Zoning
  - Hopkinsville City Limits
  - Givens\_DEM
  - Basemap
  - 2008 Aerials
  - Aerials
  - christian co



Attributes

Edit Sketch Properties

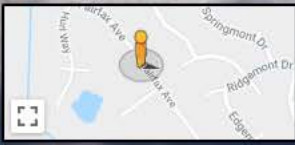
Attributes



213 Fairfax Ave  
Hopkinsville, Kentucky

Google

Street View - Oct 2013



Google

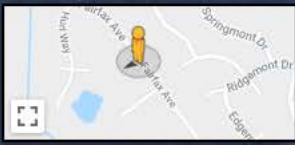
Navigation controls including a compass, zoom in (+) and zoom out (-) buttons, a street view pegman icon, and a full screen button.



210 Fairfax Ave  
Hopkinsville, Kentucky

Google

Street View - Oct 2013



Google





COUNTY OF	FISCAL YEAR	SHEET NO.	TOTAL SHEETS
CHRISTIAN		1	101
F 052 024-0380-002-004			1/9

COMMONWEALTH OF KENTUCKY  
DEPARTMENT OF HIGHWAYS

PLANS OF  
PROPOSED PROJECT  
CHRISTIAN COUNTY - KY 380  
SKYLINE DRIVE  
STP 7207 (5)  
GRADE, DRAIN & SURFACE PLANS

INDEX OF SHEETS	
SHEET NO.	DESCRIPTION
1	LAYOUT SHEET
2-21	TYPICAL SECTIONS-DIMENSIONS OF QUANTITIES
3-25	PLAN AND PROFILE SHEETS
26A-26PP	UTILITY PLAN SHEETS
27-28	RIGHT OF WAY SUMMARY SHEETS
29-30	RIGHT OF WAY STRIP MAP SHEETS
31-31AA	DETAIL SHEETS
32	REFERENCE SHEETS
33-36	SOIL PROFILE SHEETS
37-40	PAVE DRAINAGE SHEETS
40-501	CROSS SECTION SHEETS
SHEETS NOT INCLUDED IN TOTAL SHEETS	
2-25, 26A-26PP, 31A-31AA	
TOTAL BRIDGE SHEETS N/A	

STANDARD DRAWINGS		
NUMBER	DESCRIPTION	DATE
R08-003-01	RCS-002-03	TSC-280-10
R08-001-01	RCS-001-03	TSC-281-01
R08-002-03	RPM-100-05	R08-003-02
R08-070-05	RPM-100-07	R08-003-04
R08-071-03	RPM-100-03	R08-003-03
1-20-272-05	RPM-100-03	R08-003-07
R08-073-04	RPM-100-01	R08-003-02
R08-400-03	RPM-170-03	R08-100-01
R08-410-04	RPM-015-02	R08-003-04
R08-402-03	RPM-010-05	R08-002-02
R08-400-03	RPM-006-01	TSC-300-09
R08-040-03	RPM-110-01	TSC-300-06
R01-001-05	RPM-210-02	TSC-400-02
R01-000-09	RPM-210-03	R08-002-06
R01-025-02	RPM-210-03	R08-003-03
R01-000	RPM-012-07	R08-000-10
R08-000-02	RPM-038-04	R08-000-07
R08-101-03	R01-035	TSC-201-08
R01-002	RPM-110-03	TSC-205-06
		TSC-285
		TSC-270-02
		TOTAL DRAWINGS 52

NO. SETS \_\_\_\_\_ DATE \_\_\_\_\_  
RECORD PLANS \_\_\_\_\_  
CONSTRUCTION PLANS \_\_\_\_\_

REVIEWED BY \_\_\_\_\_  
DIVISION \_\_\_\_\_  
CONSTRUCTION \_\_\_\_\_

PLANS CHECKED BY: Bill G. Gause  
FINAL CHECK BY: D. B. G. J. J. J.

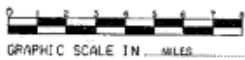
EQUATION:  
STA 85+02.29 BK =  
STA 85+05.14 AHD.

BEGIN CONSTRUCTION  
STA. 50+15.00  
SKYLINE DRIVE

END CONSTRUCTION  
STA. 100+82.00  
SKYLINE DRIVE

R.R. STATION EQUATION  
STA 76+67.36  
STA 32+50.00

THE CONTROL OF ACCESS ON THIS  
PROJECT SHALL BE BY PERMIT.



LAYOUT MAP

DESIGN CRITERIA	
CLASS OF HIGHWAY	URBAN ARTERIAL
TYPE OF TERRAIN	LEVEL
DESIGN SPEED	35 M.P.H.
REQUIRED MPSD	250
REQUIRED PSD	N/A
LEVEL OF SERVICE	C
ADT PRESENT ( 1990 )	10,400
ADT FUTURE ( 2010 )	15,800
DMV	1280
D %	N/A
T %	N/A
GEOGRAPHIC COORDINATES	
LATITUDE	36 DEGREES 51 MINUTES NORTH
LONGITUDE	87 DEGREES 22 MINUTES WEST
DESIGNED	
% RESTRICTED SD	0
LEVEL OF SERVICE	C
MAX. DISTANCE W/O PAUSING	N/A

GRID LENGTH	FOR QUALITIES	NET LENGTH	FOR QUALITIES	NET LENGTH	FOR QUALITIES	NET LENGTH	FOR QUALITIES	NET LENGTH	FOR QUALITIES
508.7	0.556	508.7	0.556	508.7	0.556	508.7	0.556	508.7	0.556
508.7	0.556	508.7	0.556	508.7	0.556	508.7	0.556	508.7	0.556



KENTUCKY  
DEPARTMENT OF HIGHWAYS  
CHRISTIAN COUNTY

PROJECT: STP 7207 (5)  
NUMBER: F052 024-0380-002-004  
LETTING DATE: 7-29-98

ORDERED BY: 4/29/98 [Signature]  
ASST. DISTRICT ENGINEER FOR PRE-CONSTRUCTION

PLAN CHECKED: 6/24/98 [Signature]  
PLAN APPROVED: 6/25/98 [Signature]



DATE: 7/29/98  
[Signature]

Lt. Sta. 53+00 To Sta. 54+10  
Const. 11 5Y Sod For  
Utility Strip

Lt. Sta. 52+15 To Sta. 52+35  
Const. 25 L.F. Standard Curb  
& Gutter

Lt. Sta. 52+25 To Sta. 53+27  
Const. 25 5Y Sod For Utility Strip

Lt. Sta. 52+25 To Sta. 53+27  
Const. 25 5Y Sod For Utility Strip

Lt. Sta. 52+25 To Sta. 53+27  
Const. 25 5Y Sod For Utility Strip

Lt. Sta. 52+25 To Sta. 53+27  
Const. 25 5Y Sod For Utility Strip

Lt. Sta. 53+00 To Sta. 54+10  
Const. 25 L.F. Standard Curb  
& Gutter

Lt. Sta. 54+00 To Sta. 55+00  
Const. 134 L.F. Standard Curb  
& Gutter

Lt. Sta. 54+75 To Sta. 55+90  
Const. 65 5Y Concrete Sidewalk

Lt. Sta. 54+75 To Sta. 55+90  
Const. 65 5Y Concrete Sidewalk

Lt. Sta. 54+75 To Sta. 55+90  
Const. 65 5Y Concrete Sidewalk

Lt. Sta. 54+75 To Sta. 55+90  
Const. 65 5Y Concrete Sidewalk

Lt. Sta. 54+75 To Sta. 55+90  
Const. 65 5Y Concrete Sidewalk

Lt. Sta. 54+75 To Sta. 55+90  
Const. 65 5Y Concrete Sidewalk

Lt. Sta. 54+75 To Sta. 55+90  
Const. 65 5Y Concrete Sidewalk

Lt. Sta. 54+75 To Sta. 55+90  
Const. 65 5Y Concrete Sidewalk

Lt. Sta. 54+75 To Sta. 55+90  
Const. 65 5Y Concrete Sidewalk

Lt. Sta. 54+75 To Sta. 55+90  
Const. 65 5Y Concrete Sidewalk

Lt. Sta. 54+75 To Sta. 55+90  
Const. 65 5Y Concrete Sidewalk

Lt. Sta. 54+75 To Sta. 55+90  
Const. 65 5Y Concrete Sidewalk

Lt. Sta. 54+75 To Sta. 55+90  
Const. 65 5Y Concrete Sidewalk

Lt. Sta. 54+75 To Sta. 55+90  
Const. 65 5Y Concrete Sidewalk

Lt. Sta. 54+75 To Sta. 55+90  
Const. 65 5Y Concrete Sidewalk

Lt. Sta. 54+75 To Sta. 55+90  
Const. 65 5Y Concrete Sidewalk

Lt. Sta. 54+75 To Sta. 55+90  
Const. 65 5Y Concrete Sidewalk

Lt. Sta. 53+00 To Sta. 54+10  
Const. 20 5Y Concrete Sidewalk

Lt. Sta. 54+00 Const. 30' Ent.  
(Conc. Ent. Pymt. 51 5Y)  
(4" Traffic Bound Base 100 5Y)

Lt. Sta. 54+75 To Sta. 55+90  
Const. 65 5Y Concrete Sidewalk

Lt. Sta. 54+75 To Sta. 55+90  
Const. 65 5Y Concrete Sidewalk

Lt. Sta. 54+75 To Sta. 55+90  
Const. 65 5Y Concrete Sidewalk

Lt. Sta. 54+75 To Sta. 55+90  
Const. 65 5Y Concrete Sidewalk

Lt. Sta. 54+75 To Sta. 55+90  
Const. 65 5Y Concrete Sidewalk

Lt. Sta. 54+75 To Sta. 55+90  
Const. 65 5Y Concrete Sidewalk

Lt. Sta. 54+75 To Sta. 55+90  
Const. 65 5Y Concrete Sidewalk

Lt. Sta. 54+75 To Sta. 55+90  
Const. 65 5Y Concrete Sidewalk

Lt. Sta. 54+75 To Sta. 55+90  
Const. 65 5Y Concrete Sidewalk

Lt. Sta. 54+75 To Sta. 55+90  
Const. 65 5Y Concrete Sidewalk

Lt. Sta. 54+75 To Sta. 55+90  
Const. 65 5Y Concrete Sidewalk

Lt. Sta. 54+75 To Sta. 55+90  
Const. 65 5Y Concrete Sidewalk

Lt. Sta. 54+75 To Sta. 55+90  
Const. 65 5Y Concrete Sidewalk

Lt. Sta. 54+75 To Sta. 55+90  
Const. 65 5Y Concrete Sidewalk

Lt. Sta. 54+75 To Sta. 55+90  
Const. 65 5Y Concrete Sidewalk

Lt. Sta. 54+75 To Sta. 55+90  
Const. 65 5Y Concrete Sidewalk

Lt. Sta. 54+75 To Sta. 55+90  
Const. 65 5Y Concrete Sidewalk

Lt. Sta. 54+00 Const. 30' Ent.  
(Conc. Ent. Pymt. 51 5Y)  
(4" Traffic Bound Base 100 5Y)

Lt. Sta. 54+75 To Sta. 55+90  
Const. 65 5Y Concrete Sidewalk

Lt. Sta. 54+75 To Sta. 55+90  
Const. 65 5Y Concrete Sidewalk

Lt. Sta. 54+75 To Sta. 55+90  
Const. 65 5Y Concrete Sidewalk

Lt. Sta. 54+75 To Sta. 55+90  
Const. 65 5Y Concrete Sidewalk

Lt. Sta. 54+75 To Sta. 55+90  
Const. 65 5Y Concrete Sidewalk

Lt. Sta. 54+75 To Sta. 55+90  
Const. 65 5Y Concrete Sidewalk

Lt. Sta. 54+75 To Sta. 55+90  
Const. 65 5Y Concrete Sidewalk

Lt. Sta. 54+75 To Sta. 55+90  
Const. 65 5Y Concrete Sidewalk

Lt. Sta. 54+75 To Sta. 55+90  
Const. 65 5Y Concrete Sidewalk

Lt. Sta. 54+75 To Sta. 55+90  
Const. 65 5Y Concrete Sidewalk

Lt. Sta. 54+75 To Sta. 55+90  
Const. 65 5Y Concrete Sidewalk

Lt. Sta. 54+75 To Sta. 55+90  
Const. 65 5Y Concrete Sidewalk

Lt. Sta. 54+75 To Sta. 55+90  
Const. 65 5Y Concrete Sidewalk

Lt. Sta. 54+75 To Sta. 55+90  
Const. 65 5Y Concrete Sidewalk

Lt. Sta. 54+75 To Sta. 55+90  
Const. 65 5Y Concrete Sidewalk

Lt. Sta. 54+75 To Sta. 55+90  
Const. 65 5Y Concrete Sidewalk

Lt. Sta. 54+75 To Sta. 55+90  
Const. 65 5Y Concrete Sidewalk

Lt. Sta. 54+75 To Sta. 55+90  
Const. 65 5Y Concrete Sidewalk

Lt. Sta. 54+00 Const. 30' Ent.  
(Conc. Ent. Pymt. 51 5Y)  
(4" Traffic Bound Base 100 5Y)

Lt. Sta. 54+75 To Sta. 55+90  
Const. 65 5Y Concrete Sidewalk

Lt. Sta. 54+75 To Sta. 55+90  
Const. 65 5Y Concrete Sidewalk

Lt. Sta. 54+75 To Sta. 55+90  
Const. 65 5Y Concrete Sidewalk

Lt. Sta. 54+75 To Sta. 55+90  
Const. 65 5Y Concrete Sidewalk

Lt. Sta. 54+75 To Sta. 55+90  
Const. 65 5Y Concrete Sidewalk

Lt. Sta. 54+75 To Sta. 55+90  
Const. 65 5Y Concrete Sidewalk

Lt. Sta. 54+75 To Sta. 55+90  
Const. 65 5Y Concrete Sidewalk

Lt. Sta. 54+75 To Sta. 55+90  
Const. 65 5Y Concrete Sidewalk

Lt. Sta. 54+75 To Sta. 55+90  
Const. 65 5Y Concrete Sidewalk

Lt. Sta. 54+75 To Sta. 55+90  
Const. 65 5Y Concrete Sidewalk

Lt. Sta. 54+75 To Sta. 55+90  
Const. 65 5Y Concrete Sidewalk

Lt. Sta. 54+75 To Sta. 55+90  
Const. 65 5Y Concrete Sidewalk

Lt. Sta. 54+75 To Sta. 55+90  
Const. 65 5Y Concrete Sidewalk

Lt. Sta. 54+75 To Sta. 55+90  
Const. 65 5Y Concrete Sidewalk

Lt. Sta. 54+75 To Sta. 55+90  
Const. 65 5Y Concrete Sidewalk

Lt. Sta. 54+75 To Sta. 55+90  
Const. 65 5Y Concrete Sidewalk

Lt. Sta. 54+75 To Sta. 55+90  
Const. 65 5Y Concrete Sidewalk

Lt. Sta. 54+75 To Sta. 55+90  
Const. 65 5Y Concrete Sidewalk

BENJAMIN G. SMITHSON } 1/2  
SIDNEY SMITHSON (WF) }  
G. MICHAEL BAKER } 1/2  
JUDY BAKER (WF) } 1/2

COUNTY OF	FISCAL YEAR	SHEET NO.	TOTAL SHEETS
CHRISTIAN	5	101	
P&P 084-0500-008-009-008/0			

SUSAN GIVENS MILES  
JAMES PATRICK GIVENS  
TRUSTEES OF  
GIVENS TRUST NO. 2

Lt. Sta. 56+28 To Sta. 56+00  
Const. 33 5Y Sod Behind Sidewalk

Lt. Sta. 56+36 To Sta. 57+07  
Const. 45 5Y Sod For Utility Strip

Lt. Sta. 56+36 To Sta. 57+07  
Const. 161 L.F. Standard Curb  
& Gutter

Lt. Sta. 56+36 To Sta. 58+00  
Const. 91 5Y Concrete Sidewalk

SUSAN JAN GIVENS MILES  
CLARENCE MICHAEL GIVENS  
JAMES PATRICK GIVENS

Rt. Sta. 56+05 To Sta. 56+00  
Const. 20 5Y Sod Behind Sidewalk

Rt. Sta. 56+72 To Sta. 58+00  
Const. 71 5Y Concrete Sidewalk

Rt. Sta. 56+72 To Sta. 58+00  
Const. 128 L.F. Standard Curb  
& Gutter

Rt. Sta. 57+46 To Sta. 58+00 Const.  
Special Swale Ditch (20 5Y Sod)

Rt. Sta. 56+72 To Sta. 58+00  
Const. 26 5Y Sod For Utility Strip

**CURVE DATA**

P.I. = STA. 57+70.34  
Δ = 22° 34' 58" LL  
C = 2° 30' 00"  
T = 457.60'  
L = 503.31'  
E = 2291.83'  
E = 4524'  
e = 0.0208%  
Radius = 150'

BENJAMIN G. SMITHSON } 1/2  
SIDNEY SMITHSON (WF) }  
G. MICHAEL BAKER } 1/2  
JUDY BAKER (WF) } 1/2

Lt. Sta. 58+40 To Sta. 58+70  
Const. 4 P.B. Ditch (100 Tons  
Channel Lining Class II Type 2-1'  
170 5Y Geotextile Fabric Type 1)

Lt. Sta. 58+47 To Sta. 58+85  
Const. 46 5Y Sod Behind Sidewalk

Lt. Sta. 58+47 To Sta. 58+85  
Const. 46 5Y Sod Behind Sidewalk

Lt. Sta. 58+47 To Sta. 58+85  
Const. 46 5Y Sod Behind Sidewalk

Lt. Sta. 58+47 To Sta. 58+85  
Const. 46 5Y Sod Behind Sidewalk

Lt. Sta. 58+47 To Sta. 58+85  
Const. 46 5Y Sod Behind Sidewalk

Lt. Sta. 58+47 To Sta. 58+85  
Const. 46 5Y Sod Behind Sidewalk

Lt. Sta. 58+47 To Sta. 58+85  
Const. 46 5Y Sod Behind Sidewalk

Lt. Sta. 58+47 To Sta. 58+85  
Const. 46 5Y Sod Behind Sidewalk

Lt. Sta. 58+47 To Sta. 58+85  
Const. 46 5Y Sod Behind Sidewalk

Lt. Sta. 58+47 To Sta. 58+85  
Const. 46 5Y Sod Behind Sidewalk

Lt. Sta. 58+47 To Sta. 58+85  
Const. 46 5Y Sod Behind Sidewalk

Lt. Sta. 58+47 To Sta. 58+85  
Const. 46 5Y Sod Behind Sidewalk

Lt. Sta. 58+47 To Sta. 58+85  
Const. 46 5Y Sod Behind Sidewalk

Lt. Sta. 58+47 To Sta. 58+85  
Const. 46 5Y Sod Behind Sidewalk

Lt. Sta. 58+47 To Sta. 58+85  
Const. 46 5Y Sod Behind Sidewalk

Lt. Sta. 58+47 To Sta. 58+85  
Const. 46 5Y Sod Behind Sidewalk

Lt. Sta. 58+47 To Sta. 58+85  
Const. 46 5Y Sod Behind Sidewalk

Lt. Sta. 58+47 To Sta. 58+85  
Const. 46 5Y Sod Behind Sidewalk

BM No. 2 - RR Spike in Power Pole  
Elev. 534.76

SCALE: 1"=20'

14





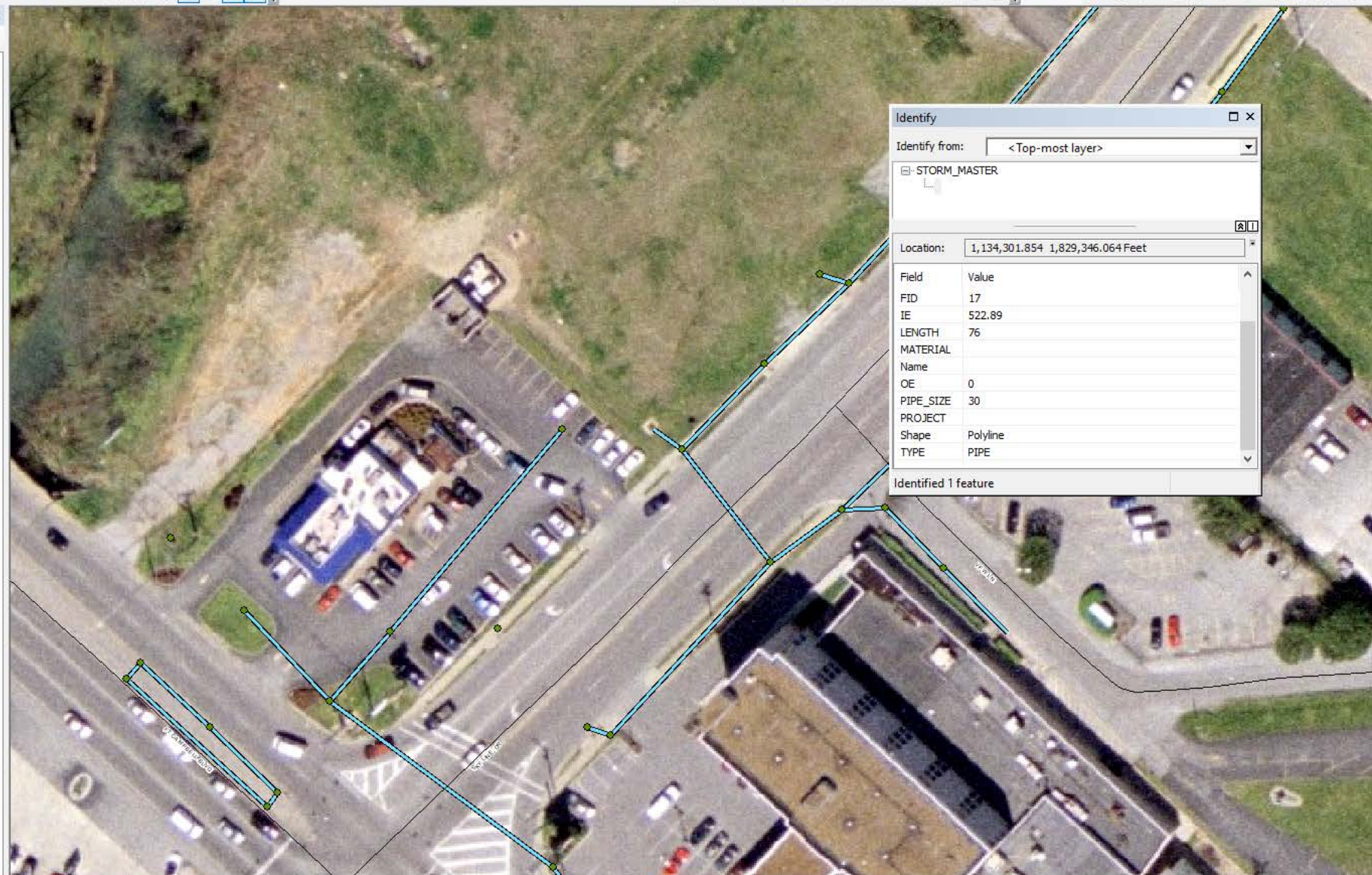
File Edit View Bookmarks Insert Selection Geoprocessing Customize Windows Help

1:612 3D Analyst Deepwood1 Georeferencing 143-846.tif Parcel Editor

Drawing Arial 10 B I U A Snapping Editor

Table Of Contents

- Base Mapping
  - Pavement Markings
  - Sivley\_posts
  - Sivley\_Fence
  - Roads
  - WINDMILL\_FARMS
  - STORM SYSTEM
    - Basins
    - Dropbox\_Working
    - STORM\_MASTER
      - TYPE
        - DITCH
        - GUTTER
        - PIPE
  - CARRIAGE WAY
  - WINDMILL\_FARMS
  - Paving
  - Contour\_city\_de1
  - HWEA Utilities
  - City\_Streets
  - Master\_structures
  - Corp\_Limits\_Parcels041817
  - cme
    - Value
      - High : 530.849
      - Low : 491.225
  - pyle1
  - Deepwood1
  - GO15\_U2
  - city\_dem
  - DFIRM
  - Zoning
  - Hopkinsville City Limits
  - Givens\_DEM
  - Basemap
  - 2008 Aerials
  - Aerials
  - christian co



Identify

Identify from: <Top-most layer>

- STORM\_MASTER

Location: 1,134,301.854 1,829,346.064 Feet

Field	Value
FID	17
IE	522.89
LENGTH	76
MATERIAL	
Name	
OE	0
PIPE_SIZE	30
PROJECT	
Shape	Polyline
TYPE	PIPE

Identified 1 feature

Attributes

Edit Sketch Properties Attributes



# iPhone Measuring Tool



# Other applications for the many-hatted.....

- Sidewalks
- Pavement Width
- Other utilities....



File Edit View Bookmarks Insert Selection Geoprocessing Customize Windows Help

1:2,038

3D Analyst Deepwood1

Georeferencing 143-846.tif

Drawing Arial 10 B I U A

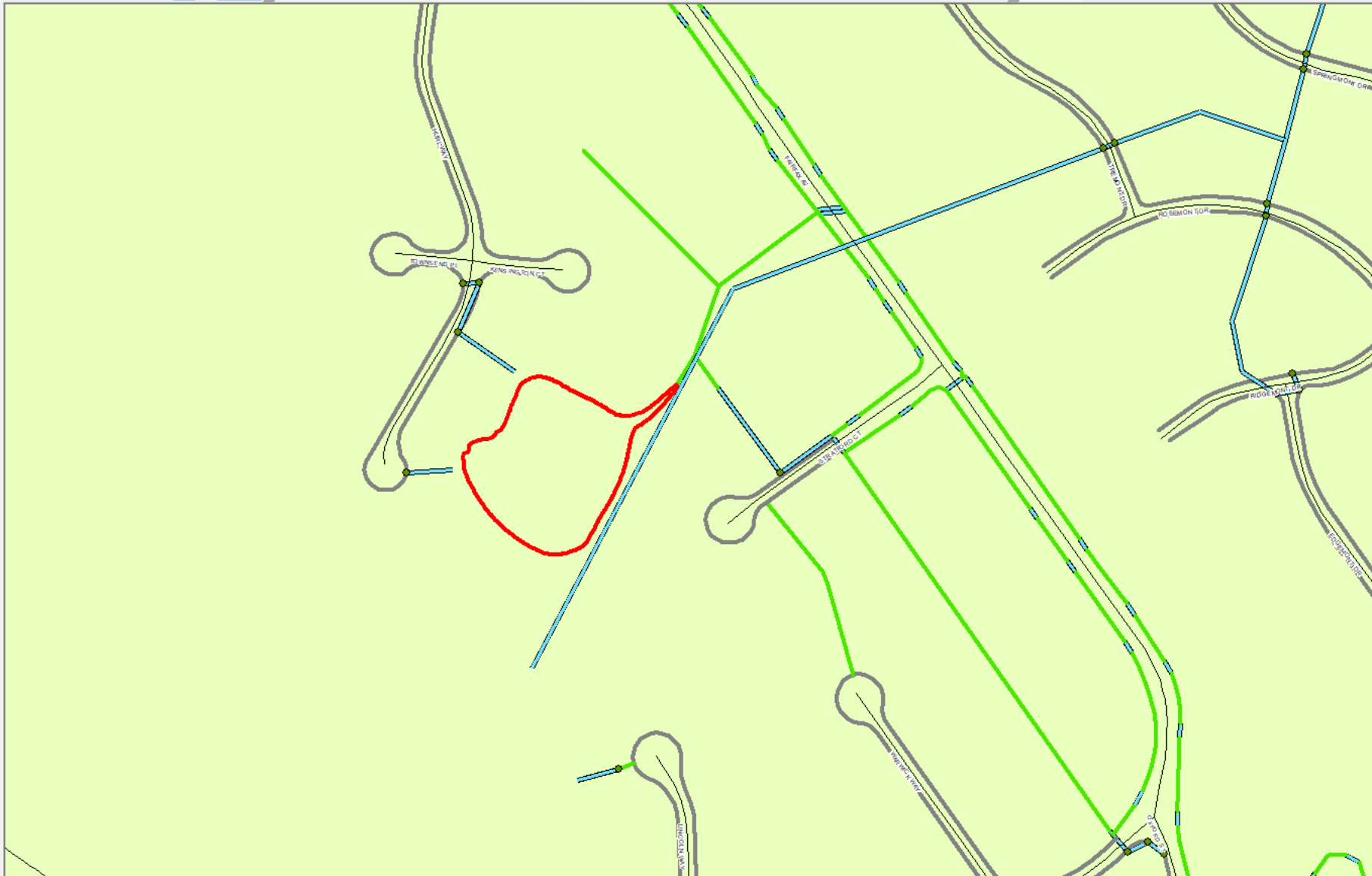
Snapping

Parcel Editor

Editor

Table Of Contents

- Base Mapping
  - Pavement Markings
  - Sivley\_posts
  - Sivley\_Fence
  - Roads
  - WINDMILL\_FARMS
  - STORM\_SYSTEM
    - Basins
    - Dropbox\_Working
    - STORM\_MASTER
      - TYPE
      - DITCH
      - GUTTER
      - PIPE
  - CARRIAGE\_WAY
  - WINDMILL\_FARMS
  - Paving
  - Contour\_city\_de1
  - HWEA\_Uilities
  - City\_Streets
  - Master\_structures
  - Corp\_Limits\_Parcels041817
  - cme
    - Value
    - High : 530.849
    - Low : 491.225
  - pyle1
  - Deepwood1
  - GO15\_U2
  - city\_dem
  - DFIRM
  - Zoning
  - Hopkinsville City Limits
  - Givens\_DEM
  - Basemap
  - 2008 Aerials
  - Aerials
  - christian co



Attributes

Edit Sketch Properties

Attributes

# Questions? Additions?

Dave Herndon, AICP, CSM, CFM  
Street Superintendent  
City of Hopkinsville  
[dave.Herndon@hopkinsvilleky.us](mailto:dave.Herndon@hopkinsvilleky.us)