

PBN²: PLANT BY NUMBERS & PAINT BY NATURE

Kentucky Stormwater Association

Berea, KY

June 27, 2019



LEXINGTON



Plant by Numbers



The Problems

- People were getting upset that all the green (bush honeysuckle) had been taken out of “their” yard (i.e., the greenway) during restoration projects
- People weren’t able to visualize the outcomes of streamside restoration projects
- People didn’t know what to plant for environmentally-friendly landscaping



The Solution

- Provide templates for low-maintenance, pollinator-friendly landscaping with visuals that show the long-term outcome
- Allow people along greenways to select their favorite, light-appropriate plan to enhance buy-in in the restoration project



How to Plant by Numbers

1. Choose a planting location and layout

Sunny Streamside Garden: Bright

Sunny Streamside Garden: Colorful

Partial Shade Streamside Garden: Lush

Partial Shade Streamside Garden: Colorful









Partial Shade Streamside Garden: Wild

Full Shade Streamside Garden: Cool

How to Plant by Numbers

2. Use the list to select plants for your garden

Full Shade Streamside Garden: Cool

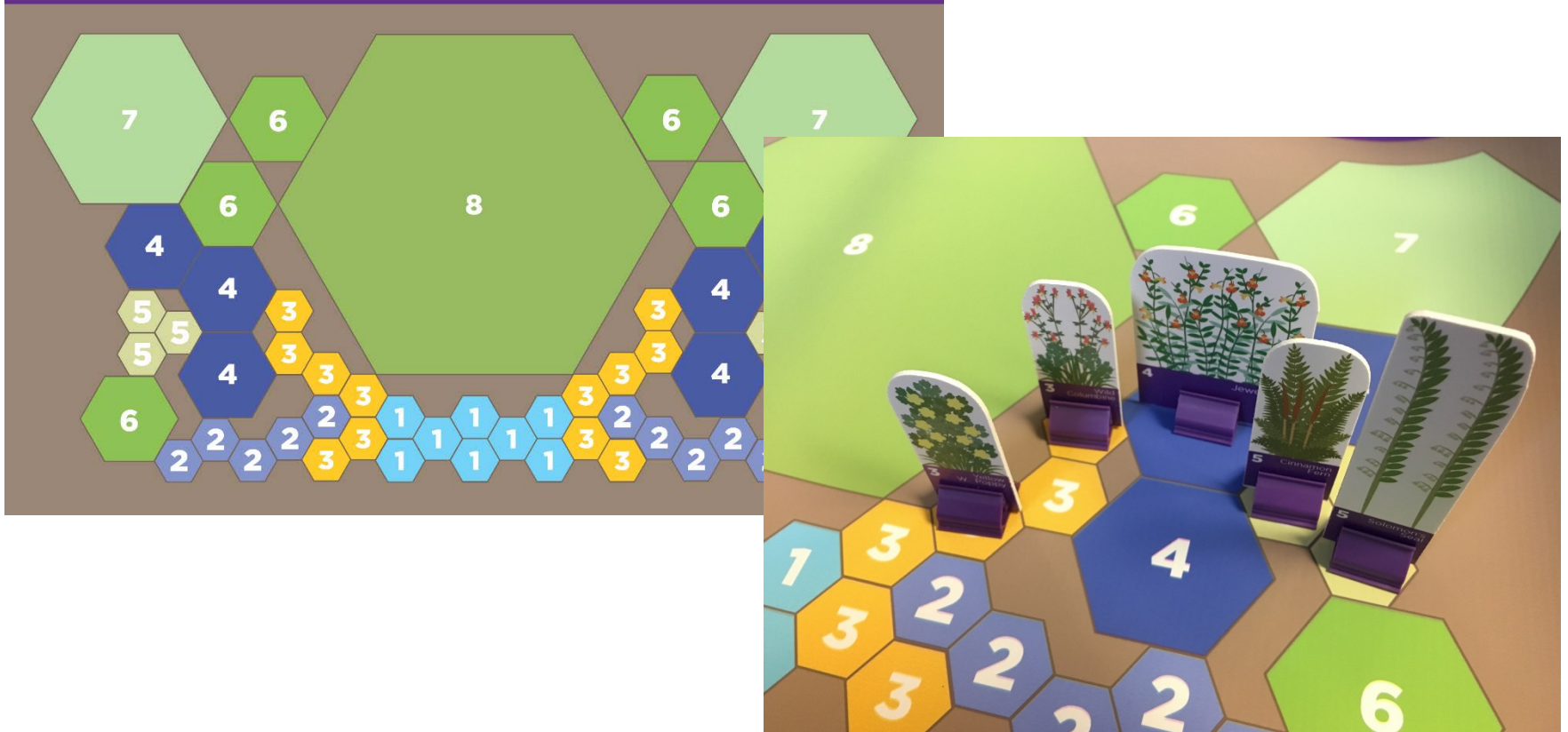
	<p>+ Wild Blue Phlox <i>Phlox divaricata</i> -or- + Wild Ginger <i>Asarum canadense</i></p> <p>(A:8/B:18)</p>		<p>+ Solomon's Seal <i>Polygonatum odoratum</i> -or- + Cinnamon Fern <i>Osmundastrum cinnamomeum</i></p> <p>(A:6/B:3)</p>
	<p>+ Virginia Bluebell <i>Mertensia virginica</i> -or- + Virginia Waterleaf <i>Hydrophyllum virginianum</i></p> <p>(A:10/B:10)</p>		<p>+ Interrupted Fern <i>Osmunda claytoniana</i> -or- + Christmas Fern <i>Polystichum acrostichoides</i></p> <p>(A:6/B:4)</p>
	<p>+ Yellow Wood Poppy <i>Stylophorum diphyllum</i> -or- + Wild Columbine <i>Aquilegia canadensis</i></p> <p>(A:12/B:10)</p>		<p>+ Ostrich Fern <i>Matteuccia struthiopteris</i> -or- + Royal Fern <i>Osmunda regalis</i></p> <p>(A:2/B:0)</p>
	<p>+ Jacob's Ladder <i>Polemonium caeruleum</i> -or- + Jewelweed <i>Impatiens capensis</i></p> <p>(A:6/B:8)</p>		<p>+ Spicebush <i>Lindera benzoin</i> -or- + Carolina Allspice <i>Calycanthus floridus</i></p> <p>(A:1/B:0)</p>



How to Plant by Numbers

3. Plant!

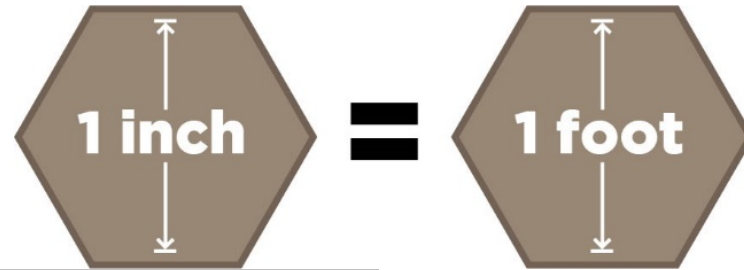
Full Shade Streamside Garden: Cool


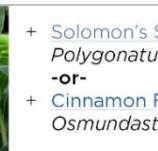








How to Plant by Numbers

Get creative!

- Mix and match
- Rearrange



	<p>+ Wild Blue Phlox <i>Phlox divaricata</i> -or- + Wild Ginger <i>Asarum canadense</i></p>	<p>(A:8/B:18)</p>		<p>+ Solomon's Seal <i>Polygonatum odoratum</i> -or- + Cinnamon Fern <i>Osmundastrum cinnamomeum</i></p>	<p>(A:6/B:3)</p>
	<p>+ Virginia Bluebell <i>Mertensia virginica</i> -or- + Virginia Waterleaf <i>Hydrophyllum virginianum</i></p>	<p>(A:10/B:10)</p>		<p>+ Interrupted Fern <i>Osmunda claytoniana</i></p>	<p>(A:6/B:4)</p>
	<p>+ Yellow Wood Poppy <i>Stylophorum diphyllum</i> -or- + Wild Columbine <i>Aquilegia canadensis</i></p>	<p>(A:12/B:10)</p>		<p>Design Your Own Streamside Garden</p>	
	<p>+ Jacob's Ladder <i>Polemonium caeruleum</i> -or- + Jewelweed <i>Impatiens capensis</i></p>	<p>(A:6/B:8)</p>			

Application

Citizens' Environmental Academy: Cane Run Greenspace





Paint by Nature



The Problem

- Native plants are perceived as weedy and unattractive



The Solution

- Showcase the beauty of native plants through art

BONUS: highlighting some of the lesser-known treasures in Fayette County



What led to Paint by Nature?

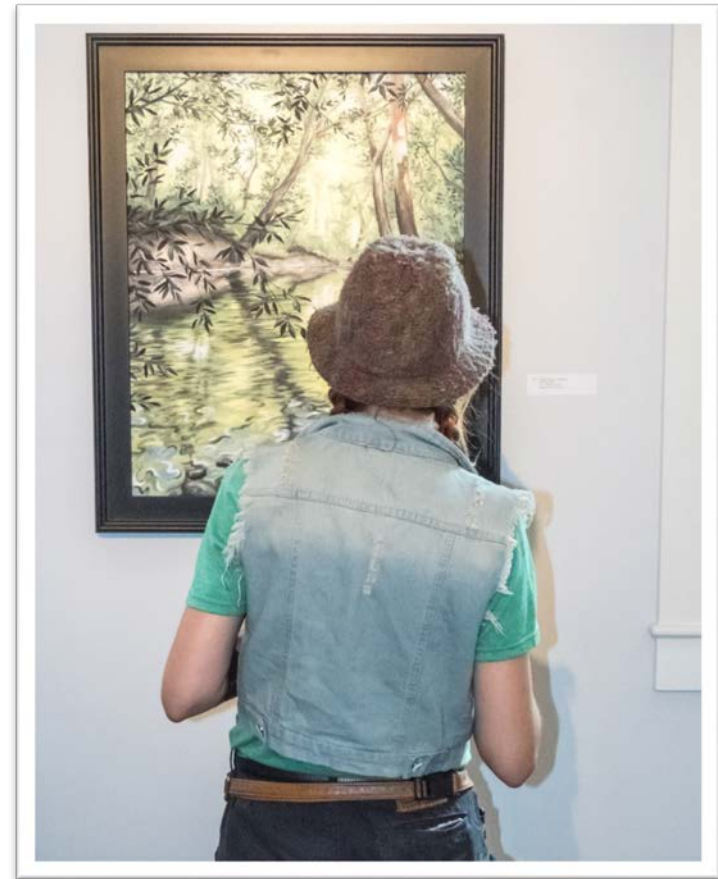
- Sparked from citizen idea
- Inspired by annual “Paint the Town” event
- Using art to celebrate beauty and benefits of native plants
- Reaching new audiences



Logistics

- Exhibit was on display at the Pam Miller Downtown Arts Center for 9 weeks
- Worked with Arts Connect to recruit artists, hang art and coordinate opening
- 13 natural spaces*
- 47 artists
- 70 artworks

* *12 featured in show*



Programming

- 8 events
- Approximately 280 attendees across events
- Gallery was open 6 days a week
- Encouraged engagement with People's Choice voting and interactive displays in room





Events

- Events spanned the entirety of the exhibition
- Included formal opening and closing receptions and lectures on related topics
- Creative use of space through partnerships with existing city and community events
 - Gallery Hop
 - Nature Hop
 - America in Bloom Conference
 - Tree Week
 - Citizens' Environmental Academy Pitch Day
- What didn't work: painting night



The Locations & Art



Deauville Greenway

Michelle Armstrong

Deauville Greenway

Mixed Media





Shaker Run Greenway

Melanie Osborn Wisdom

Wildflowers in the Spillway

Oil



Green Acres Park

Dawn Shroyer

Milkweed Baby

Acrylic



Cross Keys Wetland

Patricia Fenley

Occurrence at Cross Keys

Acrylic



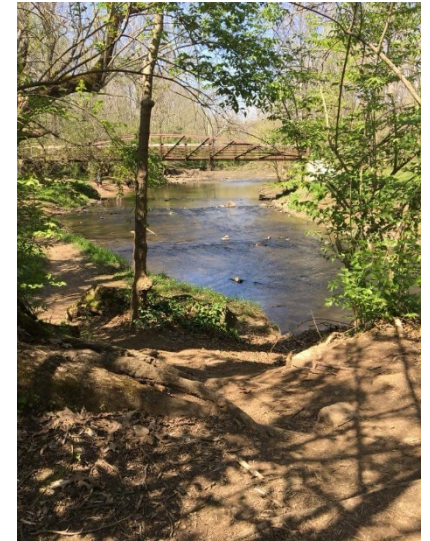


Veterans Park Stream and Woods

Darrell Ishmael

Veterans Park View

Acrylic and coal





McConnell's Trace

Cathy Vigor

Black-Eyed Susans at McConnell's Trace

Wet felted wool





Colonial Subdivision Stream

Lucy Begley

Nyssa Wildfire

Oil



Paint by Nature



LEXINGTON

UK Stream Restoration

Kiptoo Taurus

Down by the Stream

Acrylic on oak





KY Horse Park Rain Gardens

Rachel McCreary

Kentucky Beauty

Acrylic



Gardenside Park

Enrique Gonzalez

Gardenside Park

Acrylic on wood





Roland Greenway and Park

Janella Price

Thistler's Meadow

Oil



Gainesway Park Pond

Tracy Oberc

Red Winged Blackbird's Bliss

Thread and Acrylic





The Winners



3rd Place and People's Choice

Marie Waddell Pearson

Veterans Park

Oil





2nd Place

Julie Quick

The Reclamation of Cross Keys

Pastels



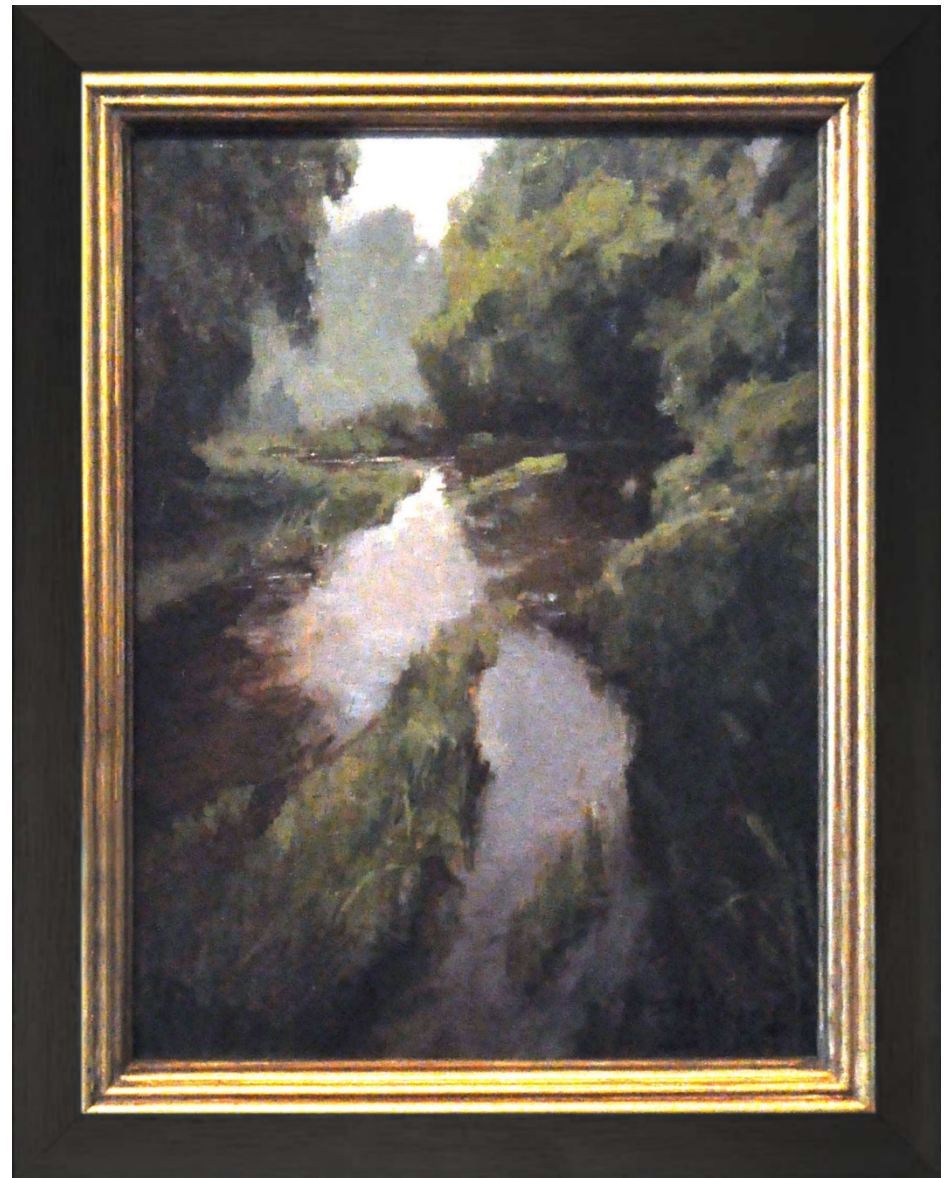


1st Place

Bill Fletcher

The Flowing Stream

Oil





Growing PBN²

Printed Materials

Plant by Numbers: Planting Guides



Plant by Numbers

Table of Contents

- i Preparing your lawn
- ii Planting key & buying plants
- iii Planting & Maintenance

Full Sun Layouts:
6+ hours of sun
 1 Bright
 3 Colorful
Partial Shade Layouts:
3-6 hours of sun
 5 Lush
 7 Colorful
 9 Wild
Full Shade Layouts:
3 hours of sun
 11 Cool

What is Plant by Numbers?

Plant by Numbers is a program for children and young beautiful, low-maintenance, pollinator-friendly landscaping. Not only know where to plant, inspired by plants we wanted, the program provides templates for full sun, partial shade and partial shade areas. Each is a guide to be used to plant your garden.

This book offers planting templates for areas with 6+ hours of sun, 3-6 hours of sun, and 3 hours of sun or in areas that collect water during periods of rainfall. Planting instructions are also given across the 10 different layouts.

Prep work is needed to be done before planting. This includes things like getting your lawn ready before the water enters a creek.

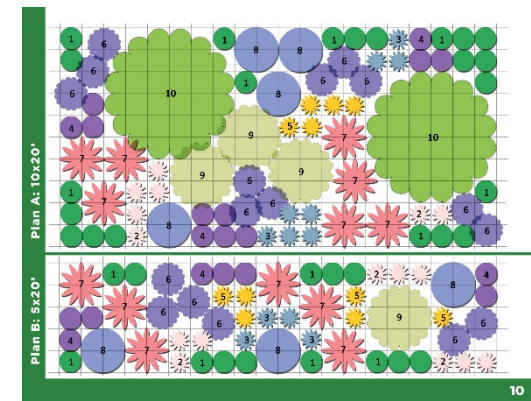
Planting is best to be done in the spring or fall. It is also best to be done in the fall or winter months.

Check the local soil conditions for the best of the local soil conditions for the best of the local soil conditions.

Preparing your lawn for streamside planting

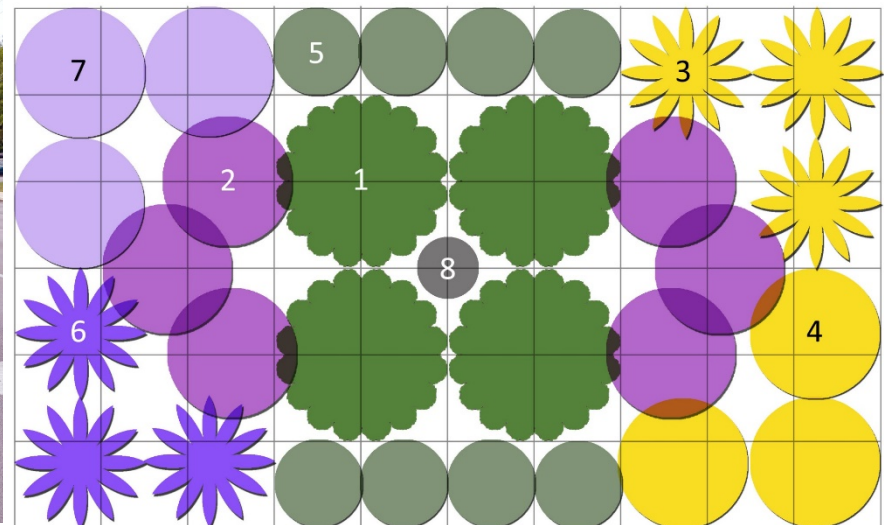
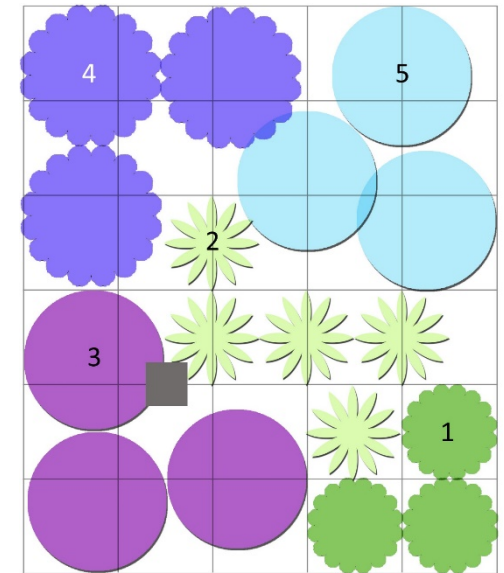
- Plant by Numbers features plants native to the Bluegrass region. These plants are low maintenance and typically thrive in Kentucky's climate. It may be difficult to get certain plants that may require the services of a local nursery or grower. Contact your local nursery or grower to see how to purchase and maintain your streamside garden.
- Are you planting along a streambank? If streambanks are eroding, they are unstable. Contact a professional to determine if your streambank is eroding and what steps are necessary to accomplish this.
- Remove invasive species. The University of Kentucky's College of Agriculture has created a list of common invasive plants, including how to manage them.
- Perform a soil test. This will determine if you need to add any nutrients to your soil and how much.
- Apply weed control. A professional can also help you determine if you should use weed control on your lawn and what products to use. Weed control may reduce the need for herbicides.
- Plant. If you're having trouble getting plants to grow, you may want to consider using a professional nursery or grower. They will have a lot of experience and can help you with the planting process.
- Watch your water. If you have a stream or creek, you will want to make sure that you are not polluting it. This means no fertilizers, no pesticides, and no other chemicals.

Partial Shade Streamside Garden: Wild			9		
1	<ul style="list-style-type: none"> • Foxglove <i>Adonis vernalis</i> • Meadow Star <i>Stellaria media</i> • Blue Star <i>Scilla maritima</i> 	(4/25/7/10)	6	<ul style="list-style-type: none"> • Blue H. Aster <i>Aster spheerodes</i> • Blue H. Aster <i>Aster spheerodes</i> • Blue H. Aster <i>Aster spheerodes</i> 	(A/12/13)
2	<ul style="list-style-type: none"> • Smooth Beardtongue <i>Penstemon digitalis</i> • Blue Star <i>Scilla maritima</i> • Meadow Star <i>Stellaria media</i> 	(A/25/13)	3	<ul style="list-style-type: none"> • Blue H. Aster <i>Aster spheerodes</i> • Blue H. Aster <i>Aster spheerodes</i> • Blue H. Aster <i>Aster spheerodes</i> 	(A/25/13)
3	<ul style="list-style-type: none"> • Blue Star <i>Scilla maritima</i> • Meadow Star <i>Stellaria media</i> • Foxglove <i>Adonis vernalis</i> 	(A/25/13)	7	<ul style="list-style-type: none"> • Blue H. Aster <i>Aster spheerodes</i> • Blue H. Aster <i>Aster spheerodes</i> • Blue H. Aster <i>Aster spheerodes</i> 	(A/25/13)
4	<ul style="list-style-type: none"> • Blue Star <i>Scilla maritima</i> • Meadow Star <i>Stellaria media</i> • Foxglove <i>Adonis vernalis</i> 	(A/25/13)	9	<ul style="list-style-type: none"> • Blue H. Aster <i>Aster spheerodes</i> • Blue H. Aster <i>Aster spheerodes</i> • Blue H. Aster <i>Aster spheerodes</i> 	(A/25/13)
5	<ul style="list-style-type: none"> • Blue Star <i>Scilla maritima</i> • Meadow Star <i>Stellaria media</i> • Foxglove <i>Adonis vernalis</i> 	(A/25/13)	10	<ul style="list-style-type: none"> • Blue H. Aster <i>Aster spheerodes</i> • Blue H. Aster <i>Aster spheerodes</i> • Blue H. Aster <i>Aster spheerodes</i> 	(A/25/13)



Streetside

- Focus on planting in easements and around mailboxes
- Paint by Nature: Streetside gallery and programming





Interactive Materials

- Plant by Numbers Game
 - McConnell Springs
 - Checkout
 - Streetside
- Urban Forestry Game
 - Scaled to Plant by Numbers Game
- Goals
 - Increase plant literacy
 - Reach new audiences





Contact Information

- Kayla Kidwell Snider (art): kkidwell@lexingtonky.gov
- Chrissie Tune (programming): ctune@lexingtonky.gov
- Angela Poe (cheerleading): apoe@lexingtonky.gov

