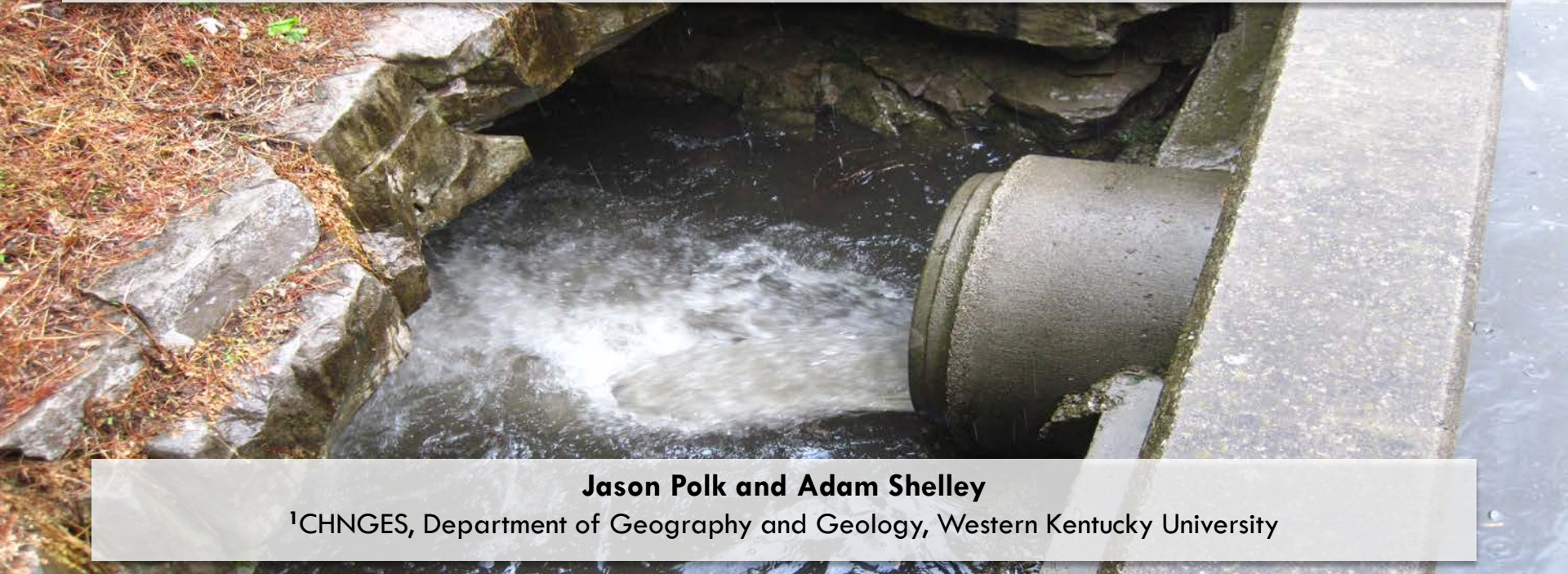


DEVELOPING A COMPREHENSIVE MS4 TRAINING PROGRAM FOR KENTUCKY STORMWATER MANAGERS



Jason Polk and Adam Shelley

¹CHNGES, Department of Geography and Geology, Western Kentucky University

Recent Advances

- ❑ Most Phase II programs are relatively new with less than 20 years experience of BMP implementation and evaluation, even less in some cases within KY.
- ❑ Last year, WEF Stormwater Institute attempted first national survey of MS4 programs and identified areas of need.
- ❑ Permit requirements continuing to change- training within MS4 programs needed (need to train the trainers).
- ❑ Focus on effectiveness of BMPs over “check boxes”

General MS4 Programs

- “Training” options typically achieved through:
 - EPA general guidance docs
 - State general guidance docs
 - Conferences or workshop CEUs/PDHs
 - Online resources not specific to locality
 - Word of mouth and “institutional” memory



1,2,4 Discussion Question Activity

- Where do you currently obtain your training/resources for your MS4 program?

1,2,4 Discussion Question Activity

- What is your biggest MS4 program challenge? Success?

1,2,4 Discussion Question Activity

- How do you measure/quantify effectiveness of MCMs 1 & 2?
What is your most effective BMP for these?

1,2,4 Discussion Question Activity

- What is your primary source for designing a visual or quantitative water quality monitoring programs?

1,2,4 Discussion Question Activity

- What is your primary funding & partnership resource to implement your MS4 program?

MS4 – 4U

- Develop a resource for comprehensive training opportunities across the state
- Focus on effective BMPs and data-driven solutions
- Clearinghouse for ideas and quantifiable metrics on BMPs that will build over time
- Incorporate other types of training, such as grant writing and cooperative projects

MS4 – 4U

- Enhance communication via online forums and coordinating workshop development for like-minded stakeholders
- Showcase for model practices tailored to the public and its perception in KY and the unique hydrogeology across the state (karst)
- Identify research opportunities and developing partnerships across institutions and vendors

Questions & Discussion



Thank You!

Dr. Jason Polk – jason.polk@wku.edu or 270-745-5015

Adam Shelley – adam.shelley@wku.edu

