



Beyond the Map

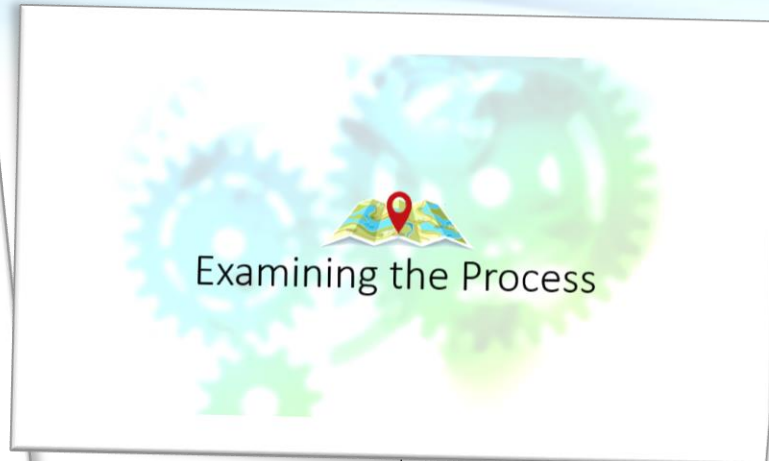
Building a Stormwater GIS for the City of Frankfort

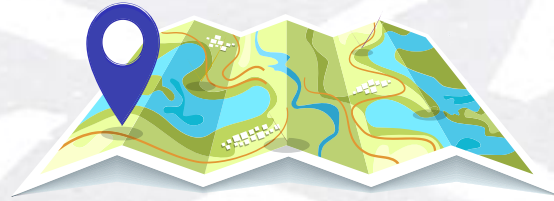
*Thomas Bradley, PE
Brandon Lewis, GISP
Zach Ausmus*



Kentucky Stormwater Association







Setting Yourself Up For Success

Things to Consider

- Goals and Expectations
- What do we need?
- What do we want?
- Budget and Timeline



Things to Consider

- End Product / End User
- Uncertainty of Existing Stormwater Network
- Pilot Project



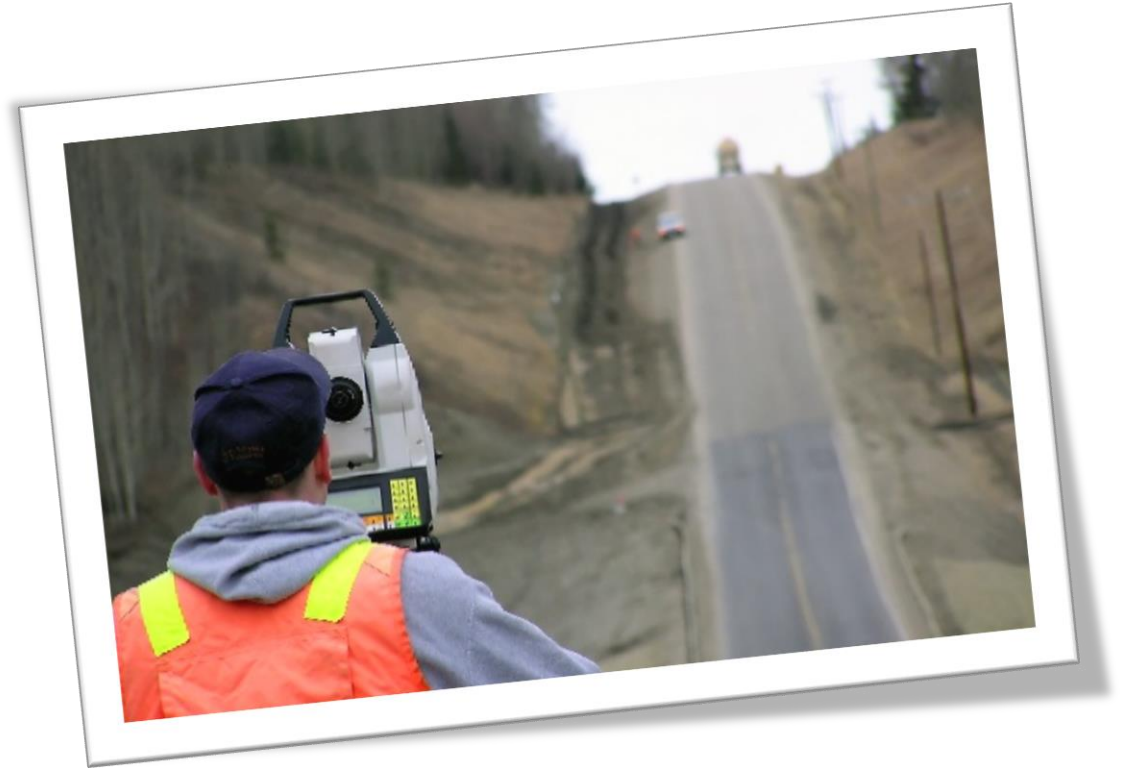
Public Involvement and Communication

- [Website](#)
- Letter of Authority
- Municipality and Consultant Relationship



Safety

- Crew Sizes
- Precautions
 - Railroad
 - Highways
 - Downtown vs. Residential
 - Exposed Manholes





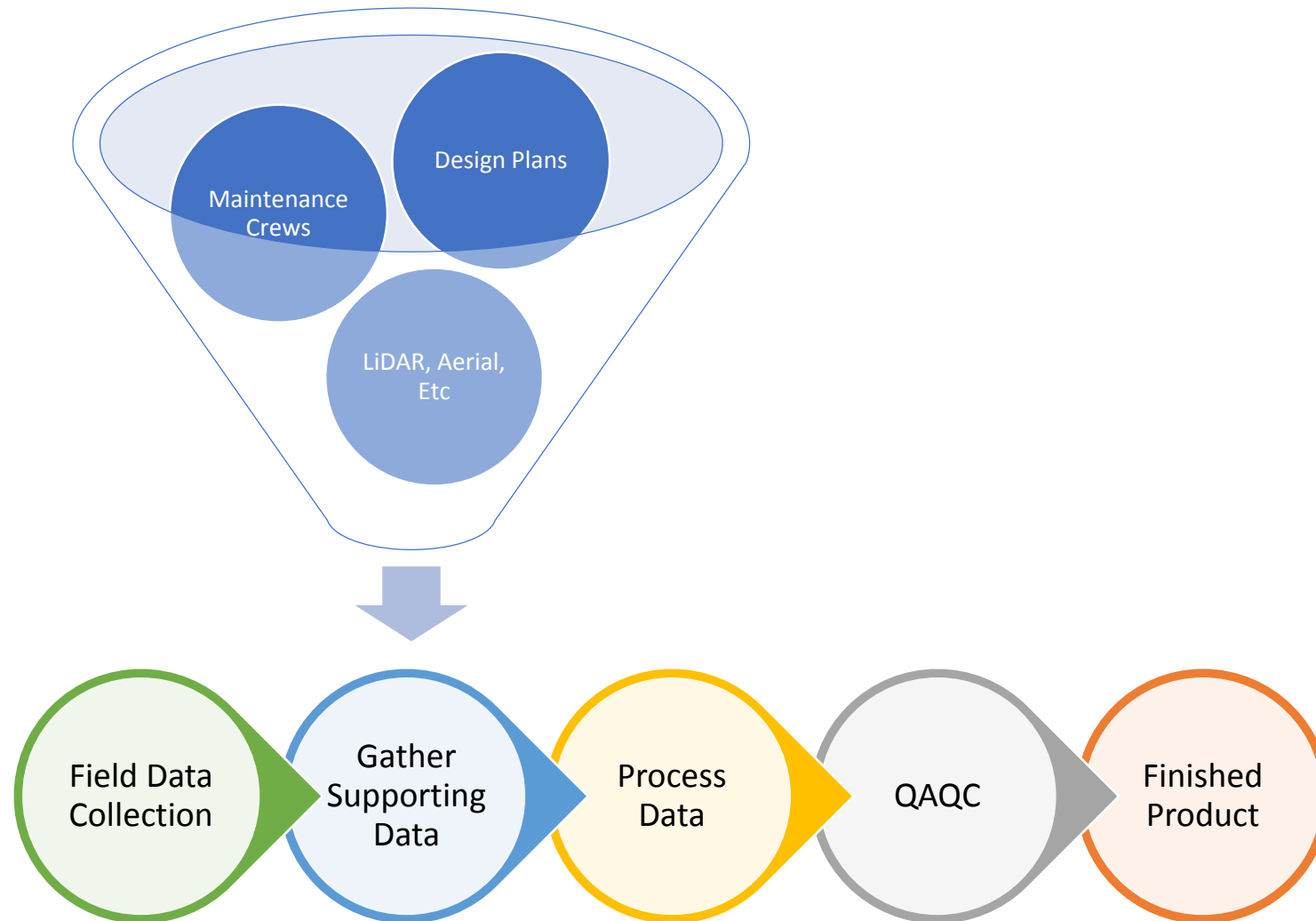
Examining the Process

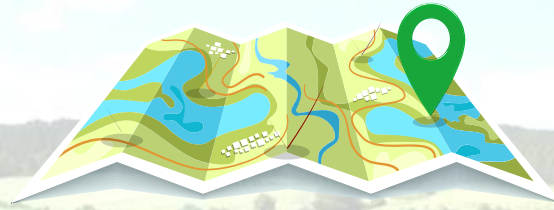
Deciding What to Collect

- Level of Detail
- Data Use, Modeling
- Photos



Workflow





Looking Down the Road

Putting the Mapping to Use

- Mobile Use
- Map Updates
 - Filling in the Gaps
 - Future Updates / Projects
 - Maintenance / Inspection



Metadata

- Crucial to Future Use and Success
- Feature / Item Level Metadata
- Feature Class / Layer Metadata

FACILITYID	12227
CREW	ELA
TIME COLLECTED	1:54:59 PM
DATE COLLECTED	6/22/2016
POINT TYPE	Catchbasin
OWNER ID	Department of Transportation
STRUCT INTEGRITY	Sound
EROSION PRESENT	None
DIAMETER	
LENGTH	30
WIDTH	18
POINT SHAPE	Rectangular
MATERIAL	Concrete
FACE TYPE	Grate
LAST MAINTAINED	<Null>
COMPLAINTS	
MAP_X	1454956.68073
MAP_Y	248869.50482
SOURCE CITATION	Field Collected
SOURCE COMMENTS	
AGENCY	V&M
MAINTENANCE REQ	NO

Summary

The purpose of this feature class is to denote the points in a municipal stormwater system.

Description

A collection of hard (manholes, catchbasins, etc) and soft (inlets and outlets) points as part of a stormwater system.

Credits

City of Frankfort, Kentucky
Vaughn & Melton Consulting Engineers

Use limitations

There are no access and use limitations for this item.

Extent

West -85.006401 **East** -69.045981
North 46.793960 **South** 37.380198

Scale Range

Maximum (zoomed in) 1:5,000
Minimum (zoomed out) 1:150,000,000