

The background is a light blue gradient with several realistic water droplets of various sizes scattered across it. The droplets have highlights and shadows, giving them a three-dimensional appearance. The main title is centered in the upper half of the image.

ORGANIZATIONAL TIPS FOR A SMOOTH COMPLIANCE REVIEW

VICKI MEREDITH, P.E

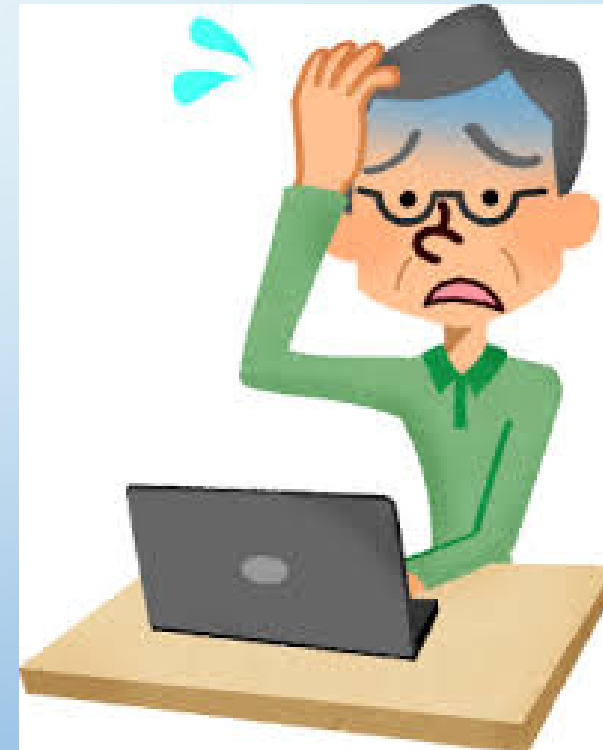
HARDIN COUNTY ENGINEER

OVERVIEW

Presentation Focus

1. Organizational Suggestions to Help You Complete Your Review
2. Start the Conversation of What You are Doing that Would be Helpful to Others

RECEIVE EMAIL THAT YOU WILL BE REVIEWED



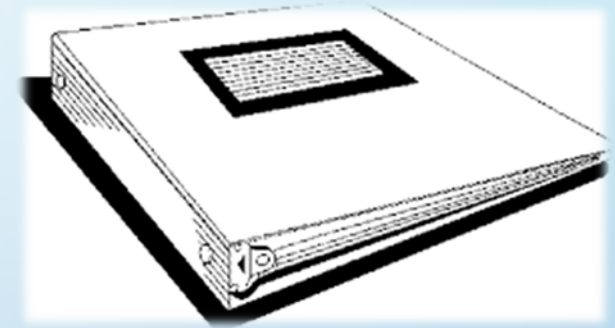


EVERYONE WANTS AN EASY BUTTON

*...Reviewers
and Submitters*

CREATE A BINDER

- Standard KDOW Inspection Form
 - Converted to Excel Spreadsheet
 - Numbered all Questions
- Create Tabbed Binder Questions 1-38
- Also Include Upfront
 - Completed KDOW Inspection Form – Acts as Table of Contents
 - Copy of Latest MS4 Annual Inspection (w/o Attachments)



Types of Answers in the Results/ Comments Column

1. Document (SWQMP, etc)
2. Referral Sheet w/ document section reference
3. Create new document
 - a. Program with Flow Chart
 - b. Other
 - a. Data Base Examples
 - b. Program Write Ups

AIOO7043

	Requirement	Status	Results or Comments
3	Has the Municipal Separate Storm Sewer System (MS4) permittee implemented a public education program to distribute educational materials to the community or conduct equivalent outreach activities about the impacts of stormwater discharges on waterbodies and the steps that the public can take to reduce pollutants in stormwater runoff? [401 KAR 5:060 Section 8]	Yes	SWQMP - Section 3.1 (See Attachment 2)
4	Has the Municipal Separate Storm Sewer System (MS4) permittee implemented a method to comply with State, Tribal and local public notice requirements when implementing a public involvement/participation program where the public is included in developing, implementing, and reviewing your storm water management program and that the public participation process should make efforts to reach out and engage all economic and ethnic groups to reduce pollutants in stormwater runoff? [401 KAR 5:060 Section 8]	Yes	SWQMP - Section 3.2 (See Attachment 2)
5	Has the Municipal Separate Storm Sewer System (MS4) permittee developed a storm sewer map, showing the locations of all outfalls and the names and locations of all waters of the United States that receive discharges from those outfalls?[401 KAR5:060 Section 8]	Yes	MS4 Storm Sewer System Mapping and Illicit Discharge September, 2015, Updated April 2019. Currently working on the update to include MS4 Areas as illustrated by the Urban Boundary in the 2010 Census as required by the 2018 MS4 Permit.
6	Has the Municipal Separate Storm Sewer System (MS4) permittee passed an ordinance, or other regulatory mechanism, a prohibition on non-stormwater discharges into the MS4, and appropriate enforcement procedures and actions?[401 KAR5:060 Section 8]	Yes	Ordinance 272, Series 2010 - An Ordinance Relating to the Control of Illicit Discharges to the Stormwater System of Hardin County, KY
7	Has the Municipal Separate Storm Sewer System (MS4) permittee developed and implemented a plan to detect and address non-stormwater discharges, including illegal dumping, into the MS4? [401 Kar 5:060 Section 8]	Yes	Illicit Discharge Detection and Elimination Plan, March 2012, Updated September 2015, Updated August 2018
8	Has the Municipal Separate Sewer System (MS4) permittee developed and implemented a plan to educate public employees, businesses, and the general public about the hazards associated with illegal discharges and improper disposal of waste? [401 KAR 5:060 Section 8]	Yes	SWQMP - Sections 3.1, 3.2 and 3.3 (See Attachment 2) and IDDE - Section 8.0 (See Attachment 7)
9	Has the Municipal Separate Storm Sewer System (MS4) permittee developed and implemented a plan to perform dry-weather screening on a representative amount of the outfalls (i.e. 20% per year)? The dry-weather screening shall include, at a minimum, the visual inspection of the discharge for indicators of pollutants. Indicators shall include odor, oil sheens, discoloration, and high degrees of siltation or aquatic plant growth. Where potential excessive pollutants are indicated, the permittee shall develop a plan to determine potential source(s) and eliminate the discharge. [401 KAR 5:060 Section 8]	Yes	Illicit Discharge Detection and Elimination Plan (See Attachment 7) ; MS4 Storm Sewer System Mapping and Illicit Discharge Screening (See Attachment 5)
10	Does the Municipal Separate Storm Sewer System (MS4) permittee have a mechanism and protocols in place that provide for the public reporting of spills and other discharges.[401 KAR5:060 Section 8]	Yes	Illicit Discharge Detection and Elimination Plan (See Attachment 7)
11	Does the Municipal Storm Sewer System (MS4) permittee adopted ordinance or other regulatory mechanism, require the implementation of proper erosion and sediment controls, and controls for other wastes, on applicable construction sites? [401 KAR 5:060 Section 8]	Yes	Ordinance 239, Series 2005 - An Ordinance Relating to Erosion Prevention and Sediment Control In Hardin County, KY

DOCUMENTS INCLUDED

- KPDES Permit: **Q1**
- SWQMP: **Q2, 3, 4, 8**
- Storm Sewer System Mapping and Illicit Discharge Screening: **Q5, 9**
- IDDE Ordinance: **Q6**
- IDDE Plan: **Q7, 9, 10**
- EPSC Ordinance: **Q11, 12, 13, 14, 15,**



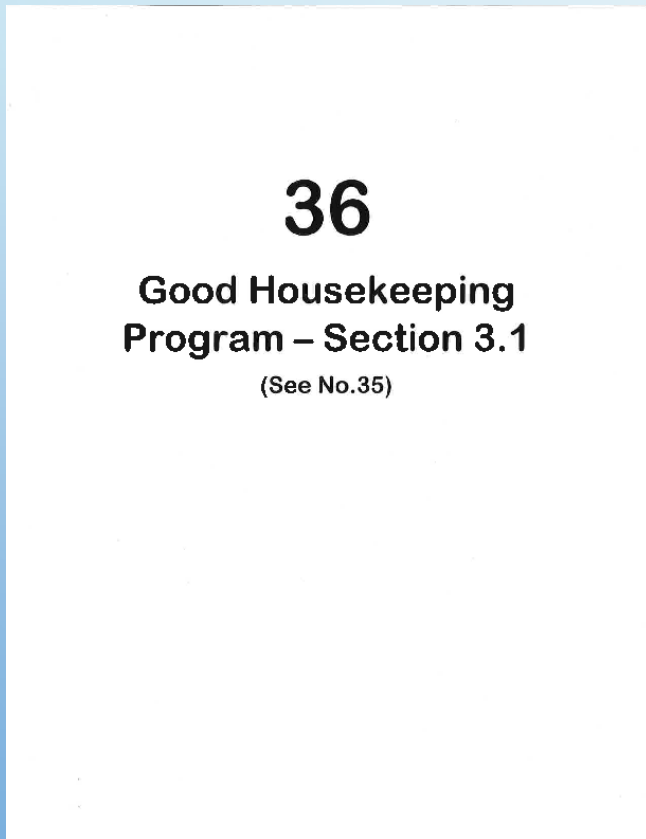
DOCUMENTS INCLUDED (CONT')

- Post Construction Ordinance: **Q25, 27**
- Water Quality Score Card: **Q28**
- Post Construction Runoff Control
Maintenance: **Q31, 32, 33, 34**
- Good Housekeeping Plan: **Q35, 36,
37, 38**



SAMPLE REFERRAL SHEET

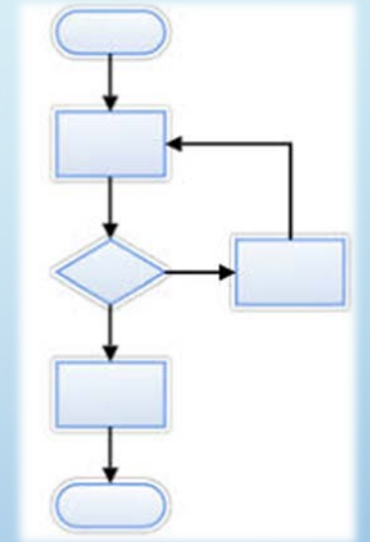
Good Housekeeping Plan: Q35, **36**, **37**, **38**




DOCUMENTS INCLUDED (CONT')

Program with Flow Charts

- Pollution Reduction From Active Sites: **Q18, 19, 20**
- Inspection of Active Construction Sites: **Q20, 22**
- Enforcement Program: **Q21**
- Post Construction Runoff Control: Stormwater Management: **Q26, 29, 30**



CONSTRUCTION SITE STORMWATER RUNOFF CONTROL – POLLUTION REDUCTION FROM ACTIVE SITES: Q18



**CONSTRUCTION SITE STORMWATER RUNOFF CONTROL
POLLUTION REDUCTION FROM ACTIVE SITES**

Overview

Hardin County has been issued a Phase II Small Municipal Separate Storm Sewer (MS4) General permit by the Kentucky Division of Water (KPDWS Permit No.: KYG200003). This permit authorizes the discharge of stormwater runoff from small MS4s to waters of the Commonwealth in accordance with the conditions in the permit.

Under this permit, Hardin County must satisfy minimum control measures (MCMs) relating to Construction Site Stormwater Runoff Control. Hardin County has passed Ordinance No. 229, Series 2005 - An Ordinance Relating to Erosion Prevention and Sediment Control to regulate this process.

Coordination

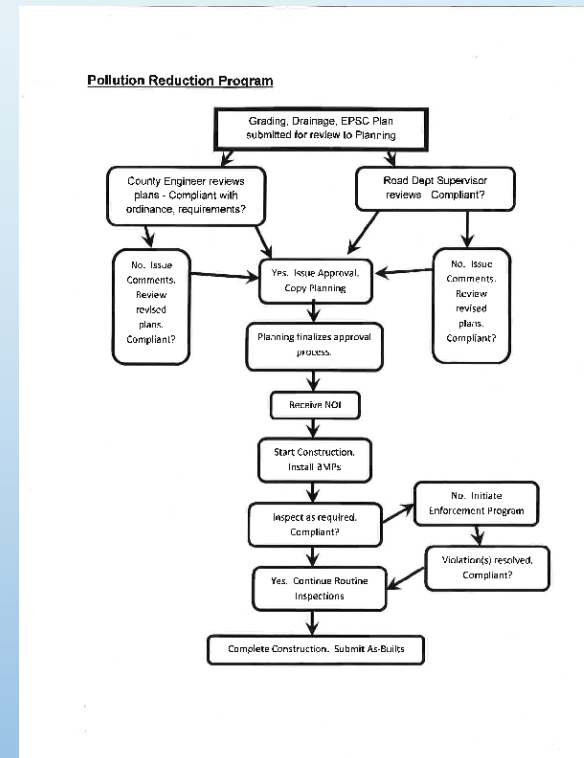
Based on the requirements outlined in the above referenced ordinance, Hardin County has developed, implemented and enforces the program to reduce pollutants in stormwater runoff from active construction sites. The program includes elements of review, inspection, compliance, and completion by the following departments of Hardin County government: Engineering, Planning and Development Commission and Road Department. These three departments meet / coordinate on a weekly basis (or as needed) to address the actions necessary to administer the active construction projects. Respective points of contact are listed below.

Points of Contact

- Engineering Department
 - Vicki Meredith, P.E. - County Engineer
 - Nicole McGinnis - Engineering Technician
- Planning and Development Commission
 - Adam King - Director
 - Currently Vacant - Assistant Director
- Road Department
 - Dwight Morgan - Road Supervisor

Review / Implementation

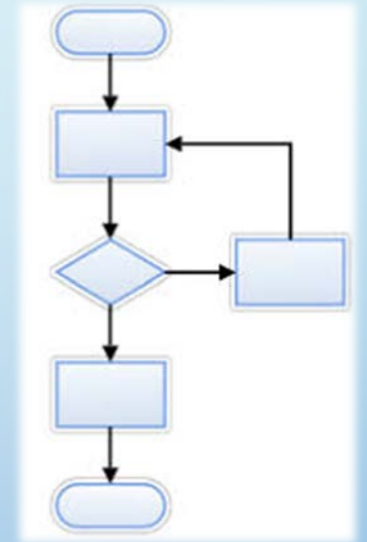
The Grading, Drainage, Erosion Prevention and Sediment Control plans are submitted to the Planning and Development Commission. The following flow chart illustrates the coordination process.



DOCUMENTS INCLUDED (CONT')

Program with Flow Charts

- Pollution Reduction From Active Sites: **Q18, 19, 20**
- Inspection of Active Construction Sites: **Q20, 22**
- Enforcement Program: **Q21**
- Post Construction Runoff Control: Stormwater Management: **Q26, 29, 30**



Q22

22

**Plan for Inspection of
Active Construction Sites**

(See No.20)

Enforcement Program

(See No. 21)

Inspection Database

(2018)

(2011-2015 located in 2015 MS4
Compliance Review Binder)

**Building Lot Permit
Database (iWorkQ)**

(Sample)

Q23 AND Q24

- Staff Training Program: **Q23**
- Contractor Training Program : **Q24**

QUESTIONS AND DISCUSSION

Contact: Vicki Meredith, P.E
Hardin County Engineer
vmeredith@hcky.org